

序言 Outline

MSU 系列
MSU Series

KSS推出了最适合微型滚珠丝杠轴端的支架组件系列产品。MSU系列在以往的支架组件的基础上大幅度减轻了重量，实现了小型化，均设计为可以安装到KSS滚珠丝杠的标准形状轴端上。请务必与滚珠丝杠配合使用。

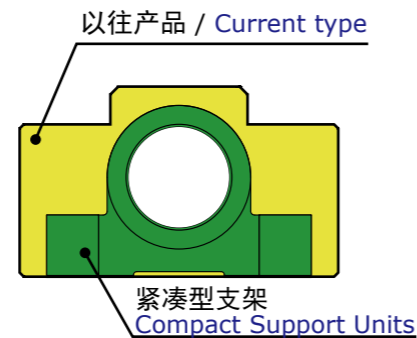
KSS provides the customer with suitable Support Units for end journal of Miniature Ball Screws. MSU series have features of light weight & compact compared to existing series. Our Support Units fit the standard end journal profile of KSS Ball Screws. Please try and use them as well as Ball Screws.

与以往产品相比,重量减轻50%以上
Light weight (more than 50% down)

与本公司产品相比 / Comparison to our current model



紧凑型支架组件
Compact Support Units



在以往支架组件的基础上最大限度地减小外形尺寸,实现了轻量小型化,最适合于微型滚珠丝杠。
This type of Support Unit has features of light-weight & compact profile compared to our conventional Support Units. KSS believes this type is suitable for Miniature Ball Screws.

●特点

- 去除了以往产品中累赘的部分,最大限度缩小了安装孔距,重量更轻、外形更紧凑。
- 安装有进行了预压管理的微型角接触球轴承,确保了轴向的高刚性。
- 角接触球轴承采用双封闭型,防尘性能佳、零件数量少,大大降低了成本。
- 轴承采用不锈钢材质,封入有低起尘润滑脂,也可在无粉尘环境中使用。
- 系列中新增加超小尺寸($\phi 3$)产品,推出超小型滚珠丝杠的支架组件。
- 将枕型和法兰型两种(固定侧、支撑侧)产品标准化,扩大了用户的选择范围。

●Features

- By eliminating extra shape of Housing, and minimizing pitch of mounting holes, light-weight & compact design Support Units became reality.
- Pre-load controlled Angular Contact Bearings are installed, so Rigidity can be kept high.
- Reasonable price has been achieved with reducing number of components, because oil seals have been eliminated by using shielded type Angular Contact Bearings.
- Angular Contact Bearings are made from stainless steel and low contamination Grease is applied, so Support Units can be used in clean-environment.
- Ultra-compact size ($f3$) is standardized, it would be suitable for Ultra Miniature Ball Screws.
- Pillow & Flange type are standardized for both fixed & supported side, so wide variety of choices are available.

●种类 / Variation

紧凑型支架组件(MSU系列)备有枕型和法兰型两种类型,可满足用户不同的安装状态。两种类型的固定侧、支撑侧组件均已实现标准化。枕型产品与以往产品相比,重量大幅度减轻,外形更紧凑。

Compact Support Units(MSU series) provide 2 choices of Housing type, which are Pillow type and Flange type. Fixed side and supported side Units are standardized for each type. In case of Pillow type, it became light-weight & more compact compared to our conventional type.

枕型 / Pillow type



法兰型 / Flange type



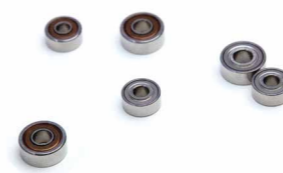
●规格 / Specifications

紧凑型支架组件(MSU系列)中安装的角接触球轴承使用不锈钢材质,封入有低起尘润滑脂。其他零件也采用不锈钢材质,或经过了发黑处理,也可应用于无尘环境。还可提供轴承钢(SUJ2)材质+封入了耐微动磨损润滑脂的产品,详情请向KSS咨询。

Angular Contact Bearings built in Compact Support Units(MSU series) are made from stainless steel and low contamination Grease is applied. Other components of Support Units are also made from stainless steel or are coated by black finishing. These series can be used in clean-environment.

[MSU系列使用的轴承 / Ball Bearings for MSU Series]

角接触球轴承 / Angular Contact Ball Bearings



用于紧凑型支架组件(MSU系列)固定侧的角接触球轴承。
根据用户需求,以轴承单体(组装好的状态)的形式销售。(参照E115-E116页)

This series is the Angular Contact Ball Bearings built in fixed side of Compact Support Units(MSU series). This can be provided as a set of DF or DB configuration only. (Refer to dimension table in page E115-E116)

深沟球轴承 / Deep Groove Bearings



用于紧凑型支架组件(MSU系列)支撑侧的深沟球轴承。
根据用户需求,以轴承单体的形式销售。(参照E117-E118页)

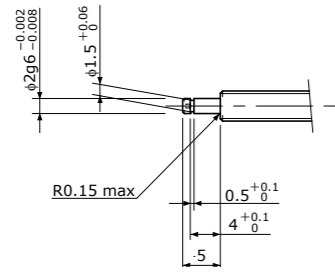
This series is the Deep Groove Ball Bearings built in supported side of Compact Support Units(MSU series). This type can be provided as a Bearing itself. (Refer to dimension table in page E117-E118)

●标准库存品 / Standardized end-journal profile

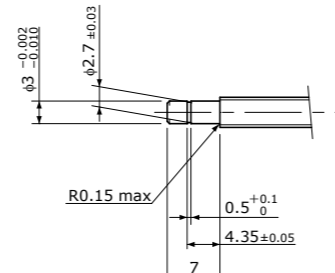
KSS支架组件均设计为可以安装到KSS微型滚珠丝杠的标准形状轴端上。KSS标准轴端形状及其对应的KSS支架组件的一览表如下所示。

KSS Support Units are designed to fit standard end-journal profile of KSS Miniature Ball Screws. Table below shows KSS Support Units list corresponding to standard end-journal profile.

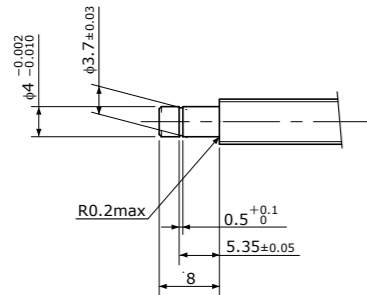
【支撑侧 / Supported side】



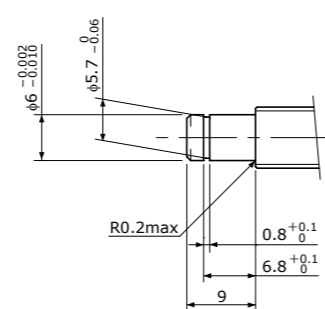
Brg. Inner dia. 轴承内径	Support Unit model 适用的支架组件
f2	MSU-3CS / MSU-3GS



Brg. Inner dia. 轴承内径	Support Unit model 适用的支架组件
f3	MSU-4CS / MSU-4GS

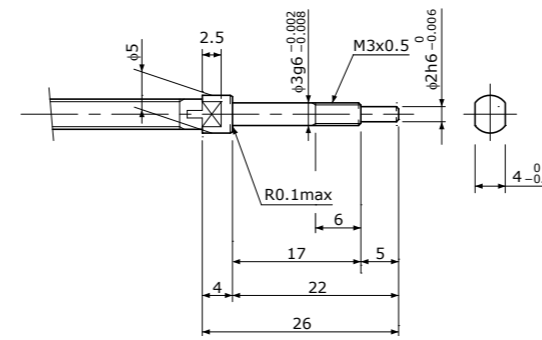


Brg. Inner dia. 轴承内径	Support Unit model 适用的支架组件
f4	MSU-5CS / MSU-5GS

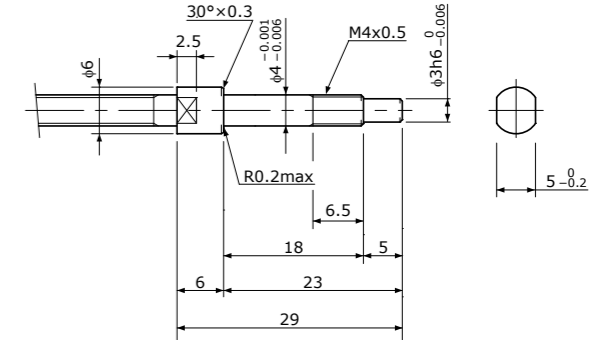


Brg. Inner dia. 轴承内径	Support Unit model 适用的支架组件
f6	MSU-6CS / MSU-6GS MSU-8CS / MSU-8GS

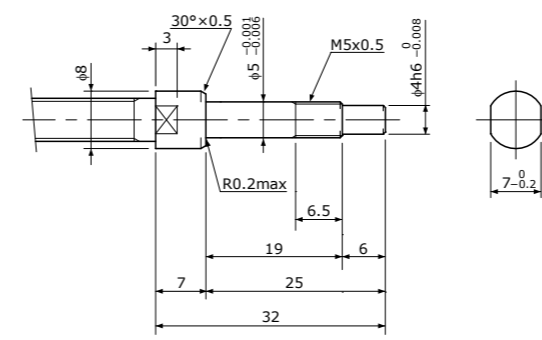
【固定侧 / Fixed side】



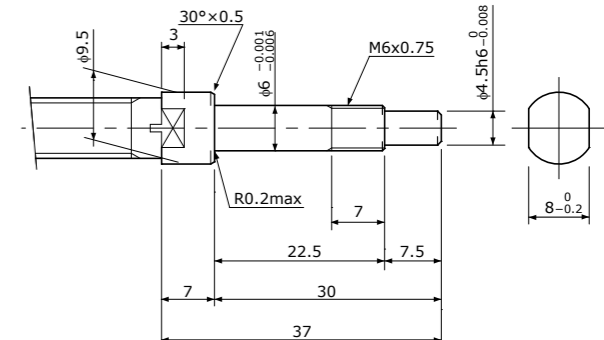
Brg. Inner dia. 轴承内径	Support Unit model 适用的支架组件
f3	MSU-3C / MSU-3G



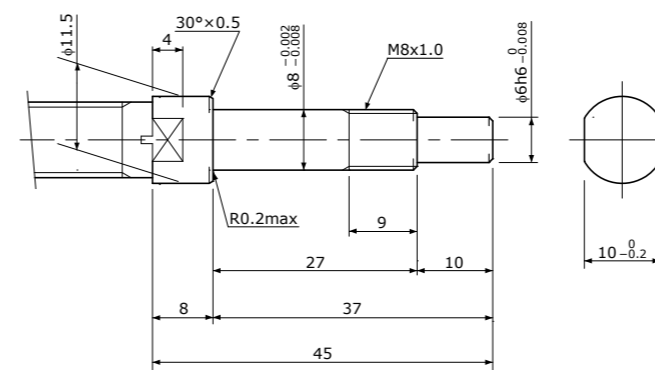
Brg. Inner dia. 轴承内径	Support Unit model 适用的支架组件
f4	MSU-4C / MSU-4G



Brg. Inner dia. 轴承内径	Support Unit model 适用的支架组件
f5	MSU-5C / MSU-5G



Brg. Inner dia. 轴承内径	Support Unit model 适用的支架组件
f6	MSU-6C / MSU-6G



Brg. Inner dia. 轴承内径	Support Unit model 适用的支架组件
f8	MSU-8C / MSU-8G

注) 如需轴承内径φ8及φ10的标准形状所对应的支架组件, 请垂询本公司。

Note) Request for Supported side Support Units with φ8 and φ10 as well as standard design, please ask KSS representative.

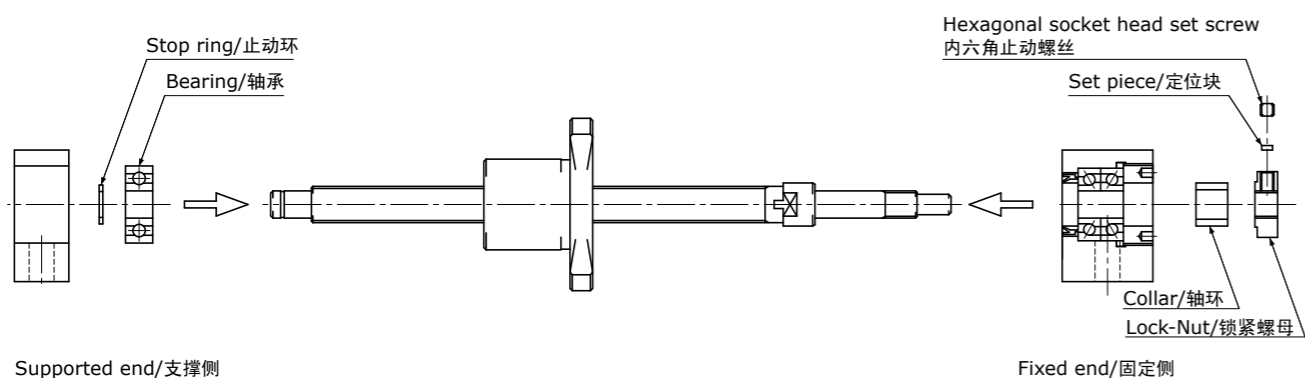
注) 如需轴承内径φ10及φ12的标准形状所对应的支架组件, 请垂询本公司。

Note) Request for fixed side Support Units with φ10 and φ12 as well as standard design, please ask KSS representative.

●安装步骤 / Mounting procedure

1. 支架组件的组装

- 1) 将固定侧支架组件组装在滚珠丝杠上。
注1) 请勿拆分支架组件。
注2) 将轴插入支架组件后, 请用锁紧螺母进行紧固, 避免定位块翘起。
- 2) 插入固定侧支架组件后, 用锁紧螺母进行紧固, 并通过定位块、内六角止动螺丝进行固定。
- 3) 组装支撑侧轴承, 用止动环固定后装入外壳。



1. Assembling Support Unit

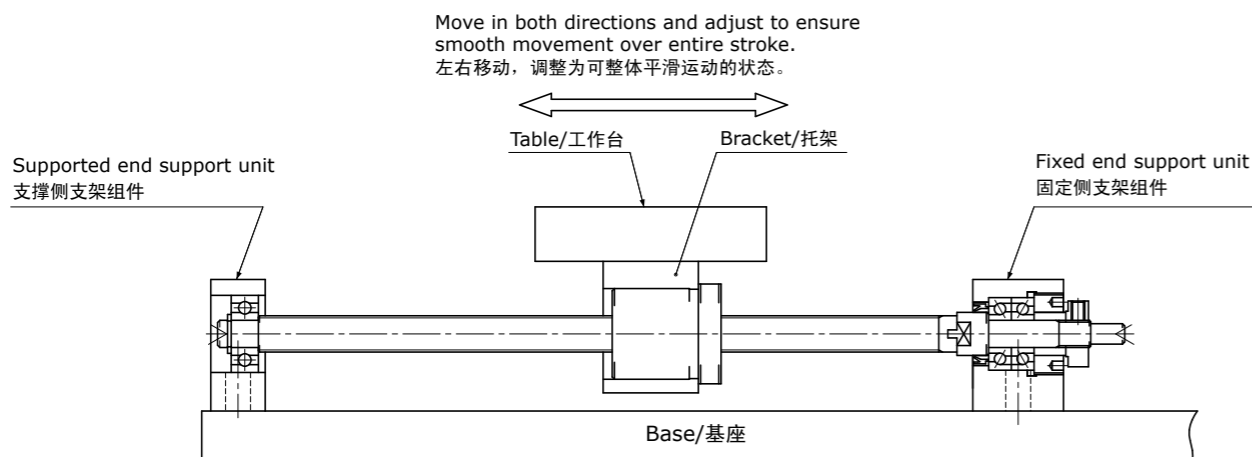
- 1) Mount the fixed end Support Unit onto the Ball Screw.
Note 1) Do not disassemble the Support Unit.
Note 2) Tighten the Lock-Nut after inserting the Shaft into the Support Unit, and make sure that the set piece is not allowed to curl.
- 2) Tighten the Lock-Nut after inserting into the fixed end Support Unit, and secure using the set piece and hexagonal socket head set screw.
- 3) Mount the supported end Bearing, secure with the stop ring, and fit into the Housing.

2. 工作台和滚珠丝杠螺母的组装以及组件和基座的安装

- 1) 将滚珠丝杠螺母插入工作台(使用托架时插入托架)后临时固定。
- 2) 将固定侧支架组件临时固定到基座上。
注1) 此时, 请将工作台靠近支架组件侧进行定心, 并将工作台调整到可平滑移动的状态。

2. Mounting the table on the Ball Screw Nut and mounting the Support Unit on the base

- 1) Insert the Ball Screw Nut into the table, or, when using Brackets to attach the table to the Ball Screw Nut, insert into the Bracket, and loosely tighten.
- 2) Loosely tighten the fixed end Support Unit to the base.
Note 1) Move the table toward the Support Unit and center it. Adjust to ensure that the table moves smoothly.

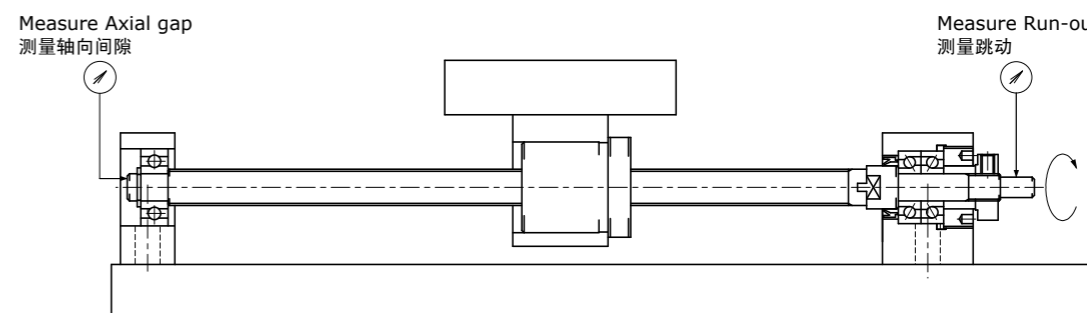


3. 支撑侧外壳和基座的安装及精度确认

- 1) 将工作台靠近支撑侧外壳并进行定心, 然后使工作台往复运动, 将其调整到整体可平滑运动的状态, 然后临时固定到基座上。
- 2) 通过千分表确认滚珠丝杠轴端的跳动、轴向间隙, 同时切实紧固螺母、固定侧支架组件及支撑侧外壳。

3. Mounting the supported end Housing on the base and checking accuracy

- 1) Move the table toward the supported end Housing and center it. Move the table in both directions and adjust to ensure smooth movement over entire length. Secure loosely to the base.
- 2) Check the Run-out and Axial gap at the Ball Screw Shaft end using a dial gauge, and fully tighten the Nut, fixed end Support Unit and supported end Housing.

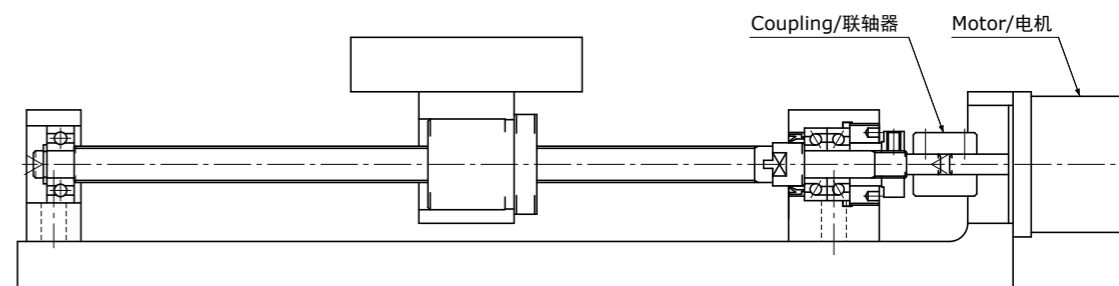


4. 与电机的连接

- 1) 将电机固定到主体上。
- 2) 通过联轴器连接电机和滚珠丝杠。
- 3) 请进行充分的磨合运行。

4. Connecting to the Motor

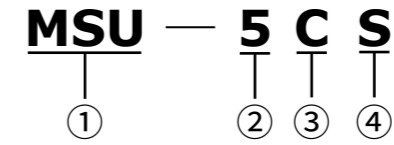
- 1) Secure the Motor to the main Unit.
- 2) Connect the Motor to the Ball Screw using the coupling.
- 3) Run in thoroughly.



注) 上述内容为枕型、块型的安装步骤, 法兰型也请按相同要领进行安装。

Note) Instruction above is for Pillow type and Block type Support Units, In case of Flange type Support Units, the same procedure can be applicable.

公称型号的构成 / Model number notation



- ①系列符号
MSU : KSS紧凑型支架组件系列
- ②公称型号
- ③形状符号
C : 枕型
G : 法兰型
- ④轴端符号
无符号 : 固定侧
S : 支撑侧

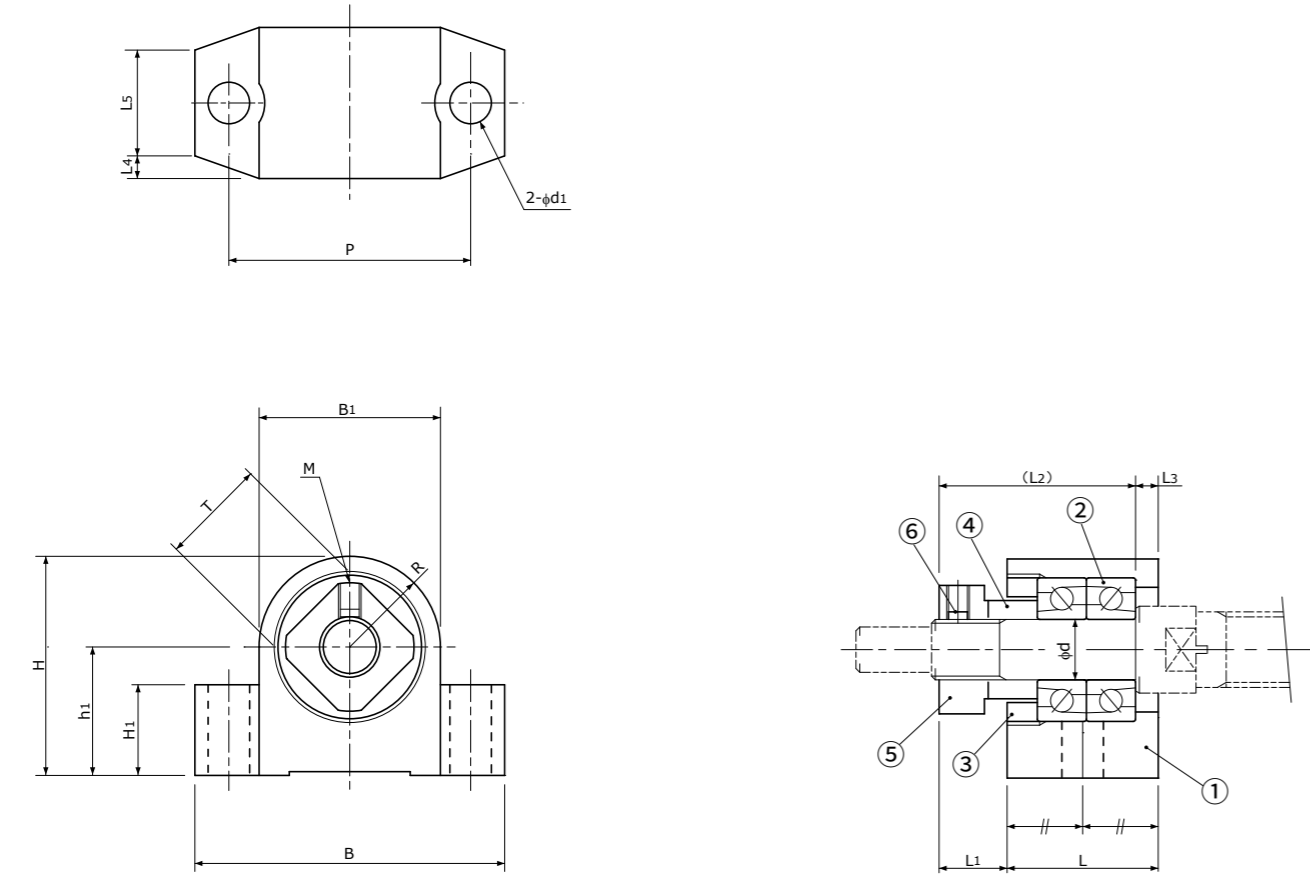
- ①Series No.
MSU : KSS Compact Support Unit Series
- ②Nominal number
- ③Housing type
C : Pillow type
G : Flange type
- ④End-journal type
None : fixed side
S : supported side

注)支撑侧支架组件的公称型号可能与轴承内径不一致, 敬请注意。
Note)In some cases, nominal number is not the same as Bearing Inner diameter.

Parts List / 零件表

Part No. 零件号	Part name 零件名称	Qty 数量
1	Housing / 外壳 (Black Chrome coating / 黑铬处理)	1
2	Bearings / 轴承 (with Shields / 带护板)	1 set
3	Pressure Nut / 压紧螺母	1
4	Collar / 轴环	1
5	Lock Nut / 锁紧螺母	1
6	Hexagonal socket head set screw / 内六角止动螺丝 (with set piece / 带定位块)	1 set

Unit(单位):mm



Type 型号	Brg. Inner dia. 轴承内径 d 0 -0.005	L	L ₁	L ₂	L ₃	L ₄	L ₅	B	H	h ₁ 0 -0.03	B ₁	H ₁	R	P	d ₁	M	T	Lock Nut 锁紧螺母	Tightening torque of Lock Nut 锁紧螺母的紧固扭矩 N·cm	Bearing 使用的轴承	Mass 重量 g	Type 型号
MSU-3C	3	12.5	5.5	16.5	1.5	2	8.5	24	14.5	9	11	5	5.5	18	3.5	M3	8	M3×0.5	80	MTA03-08HP5DF	16.5	MSU-3C
MSU-4C	4	14	5.5	17.5	2	2.5	9	27	17	10	14	6	7	21	3.5	M3	10	M4×0.5	100	MTA04-11HP5DF	27	MSU-4C
MSU-5C	5	15	5.5	18.5	2	2	11	30.5	19.5	11	17	6	8.5	23	4.5	M3	11	M5×0.5	140	MTA05-13HP5DF	35	MSU-5C
MSU-6C	6	17	7.5	22	2.5	2.5	12	35	22.5	13	19	8	9.5	26	5.5	M3	12	M6×0.75	190	MTA06-15HP5DF	50	MSU-6C
MSU-8C	8	20	9	26	3	3	14	41	29	17	24	12	12	32	5.5	M3	14	M8×1.0	200	MTA08-19HP5DF	96	MSU-8C

注1)角接触球轴承(ISC制)采用不锈钢材质, 并注入有低起尘润滑脂(NSK LG2), 是无尘规格的轴承。

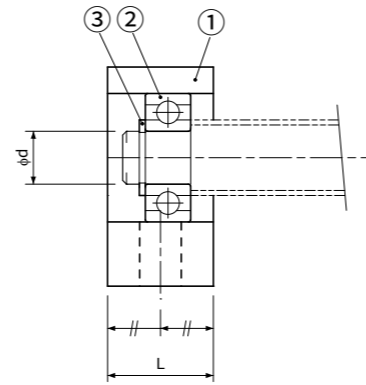
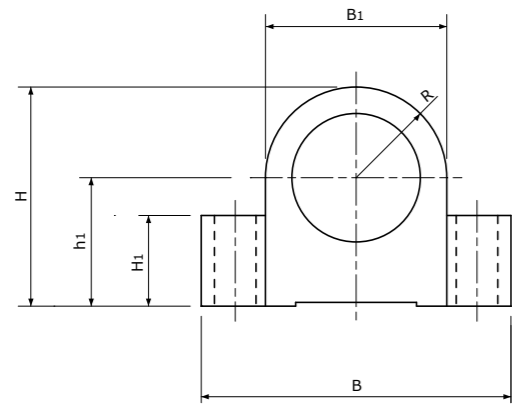
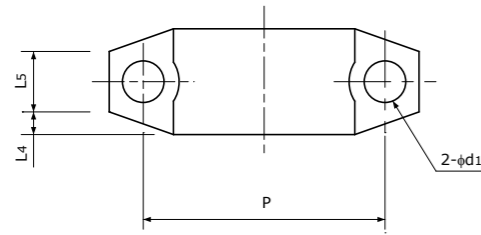
注2)压紧螺母、轴环、锁紧螺母均经过了发黑处理。

注3)支架组件已经过预压调整, 请勿进行拆分。

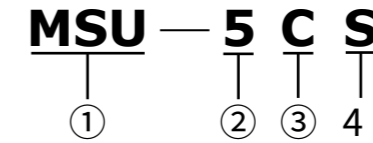
Note 1) Angular Contact Ball Bearings (manufactured by ISC) are designed for clean room use, they are made of Stainless steel with low contamination grease (NSK LG2) packed.

Note 2) Pressure Nut, Collar and Lock Nut are coated with Black finishing.

Note 3) Do not disassemble Support Unit, as they are pre-loaded and pre-adjusted.



●公称型号的构成 / Model number notation



- ①系列符号
MSU : KSS紧凑型支架组件系列
- ②公称型号
- ③形状符号
C : 枕型
G : 法兰型
- ④轴端符号
无符号 : 固定侧
S : 支撑侧

- ①Series No.
MSU : KSS Compact Support Unit Series
- ②Nominal number
- ③Housing type
C : Pillow type
G : Flange type
- ④End-journal type
None : fixed side
S : supported side

注)支撑侧支架组件的公称型号可能与轴承内径不一致, 敬请注意。
Note)In some cases, nominal number is not the same as Bearing Inner diameter.

Parts List / 零件表

Part No. 零件号	Part name 零件名称	Qty 数量
1	Housing / 外壳 (Black Chrome coating / 黑铬处理)	1
2	Bearing / 轴承 (with Shields / 带护板)	1
3	Stop ring / 止动环	1

Unit(单位):mm

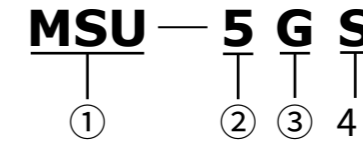
Type 型号	Brg. Inner dia. 轴承内径 d 0 -0.005	L	L4	L5	B	H	h1 0 -0.03	B1	H1	R	P	d1	Bearing 使用的轴承	Stop ring 使用的止动环	Mass 重量 g	Type 型号
MSU-3CS	2	8	2	4	24	14.5	9	11	5	5.5	18	3.5	602HZZ	ETW-1.5(OCHIAI / 落合)	8.5	MSU-3CS
MSU-4CS	3	10	2.5	5	27	17	10	14	6	7	21	3.5	623HZZ	G-3(IWATA / 磐田电工)	16	MSU-4CS
MSU-5CS	4	10	2	6	30.5	19.5	11	17	6	8.5	23	4.5	624HZZ	G-4(IWATA / 磐田电工)	21	MSU-5CS
MSU-6CS	6	12	2.5	7	35	22.5	13	19	8	9.5	26	5.5	B6-113HZZ1	STW-6(OCHIAI / 落合)	32	MSU-6CS
MSU-8CS	6	14	3	8	41	29	17	24	12	12	32	5.5	606HZZ1	STW-6(OCHIAI / 落合)	60	MSU-8CS

注1)深沟球轴承(ISC制)采用不锈钢材质,并注入有低起尘润滑脂(NSK LG2),是无尘规格的轴承。
注2)交货时使用的止动环可能是同等规格的其他产品。

Note 1) Deep Groove Ball Bearing (manufactured by ISC) is designed for clean room use, it is made of Stainless steel with low contamination grease (NSK LG2) packed.

Note 2) Stop ring may be the equivalent one described in the table above.

●公称型号的构成 / Model number notation



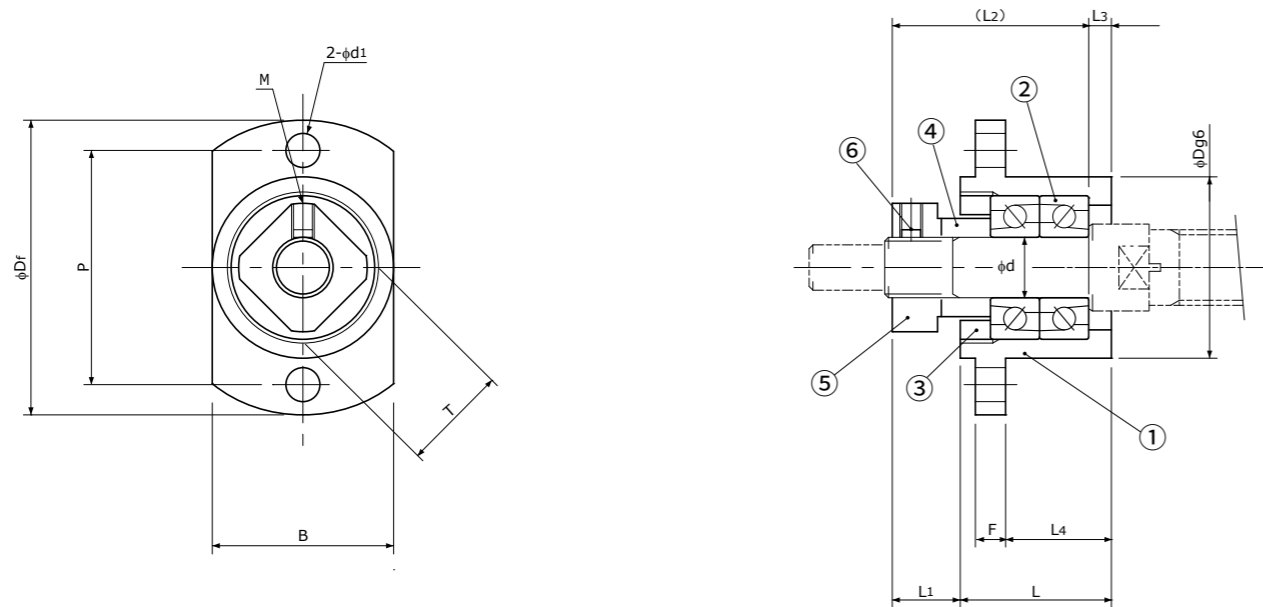
- ①系列符号
MSU : KSS紧凑型支架组件系列
- ②公称型号
- ③形状符号
C : 枕型
G : 法兰型
- ④轴端符号
无符号 : 固定侧
S : 支撑侧

- ①Series No.
MSU : KSS Compact Support Unit Series
- ②Nominal number
- ③Housing type
C : Pillow type
G : Flange type
- ④End-journal type
None : fixed side
S : supported side

注)支撑侧支架组件的公称型号可能与轴承内径不一致, 敬请注意。
Note)In some cases, nominal number is not the same as Bearing Inner diameter.

Parts List / 零件表

Part No. 零件号	Part name 零件名称	Qty 数量
1	Housing / 外壳 (Black Chrome coating / 黑铬处理)	1
2	Bearings / 轴承 (with Shields / 带护板)	1 set
3	Pressure Nut / 压紧螺母	1
4	Collar / 轴环	1
5	Lock Nut / 锁紧螺母	1
6	Hexagonal socket head set screw / 内六角止动螺丝 (with set piece / 带定位块)	1 set



Unit(单位):mm

Type 型号	Brg. Inner dia. 轴承内径 d 0 -0.005	L	L ₁	L ₂	L ₃	F	L ₄	B	D _f	D	P	d ₁	M	T	Lock Nut 锁紧螺母	Tightening torque of Lock Nut 锁紧螺母的紧固扭矩 N·cm	Bearing 使用的轴承	Mass 重量 g	Type 型号
MSU-3G	3	12.5	5.5	16.5	1.5	3	7.5	11	23	11	17	3.5	M3	8	M3×0.5	80	MTA03-08HP5DF	12.5	MSU-3G
MSU-4G	4	13.5	5.5	17.5	1.5	3	8.5	14	26	14	20	3.5	M3	10	M4×0.5	100	MTA04-11HP5DF	20	MSU-4G
MSU-5G	5	15	5.5	18.5	2	3	10	17	29	17	23	3.5	M3	11	M5×0.5	140	MTA05-13HP5DF	30	MSU-5G
MSU-6G	6	17	7.5	22	2.5	4	12	19	34	19	26	4.5	M3	12	M6×0.75	190	MTA06-15HP5DF	42	MSU-6G
MSU-8G	8	20	9	26	3	4	16	24	39	24	31	4.5	M3	14	M8×1.0	200	MTA08-19HP5DF	70	MSU-8G

注1)角接触球轴承(ISC制)采用不锈钢材质,并注入有低起尘润滑脂(NSK LG2),是无尘规格的轴承。

注2)压紧螺母、轴环、锁紧螺母均经过了发黑处理。

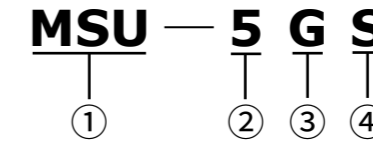
注3)支架组件已经过预压调整,请勿进行拆分。

Note 1) Angular Contact Ball Bearings (manufactured by ISC) are designed for clean room use, they are made of Stainless steel with low contamination grease (NSK LG2) packed.

Note 2) Pressure Nut, Collar and Lock Nut are coated with Black finishing.

Note 3) Do not disassemble Support Unit, as they are pre-loaded and pre-adjusted.

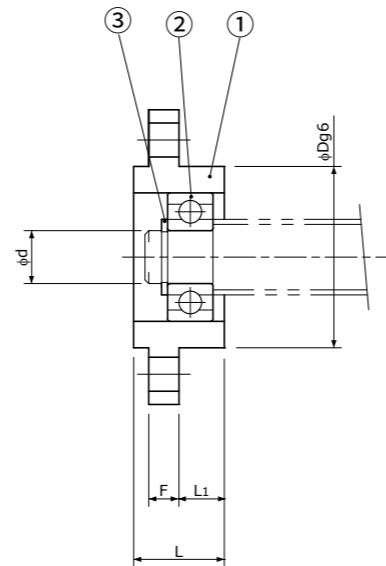
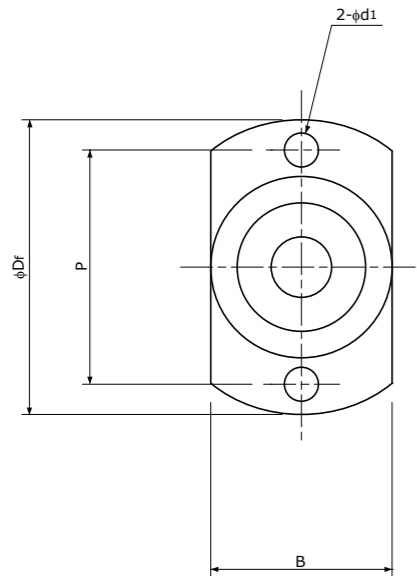
●公称型号的构成 / Model number notation



- ①系列符号
MSU : KSS紧凑型支架组件系列
- ②公称型号
- ③形状符号
C : 枕型
G : 法兰型
- ④轴端符号
无符号 : 固定侧
S : 支撑侧

- ①Series No.
MSU : KSS Compact Support Unit Series
- ②Nominal number
- ③Housing type
C : Pillow type
G : Flange type
- ④End-journal type
None : fixed side
S : supported side

注)支撑侧支架组件的公称型号可能与轴承内径不一致, 敬请注意。
Note)In some cases, nominal number is not the same as Bearing Inner diameter.



Parts List / 零件表

Part No. 零件号	Part name 零件名称	Qty 数量
1	Housing / 外壳 (Black Chrome coating / 黑铬处理)	1
2	Bearing / 轴承 (with Shields / 带护板)	1
3	Stop ring / 止动环	1

Unit(单位):mm

Type 型号	Brg. Inner dia. 轴承内径 d 0 -0.005	L	F	L ₁	B	Df	D	P	d ₁	Bearing 使用的轴承	Stop ring 使用的止动环	Mass 重量 g	Type 型号
MSU-3GS	2	8	3	3	11	23	11	17	3.5	602HZZ	ETW-1.5(OCHIAI / 落合)	7.5	MSU-3GS
MSU-4GS	3	10	3	5	14	26	14	20	3.5	623HZZ	G-3(IWATA / 磐田电工)	12	MSU-4GS
MSU-5GS	4	10	3	5	17	29	17	23	3.5	624HZZ	G-4(IWATA / 磐田电工)	16	MSU-5GS
MSU-6GS	6	10	4	5	19	34	19	26	4.5	B6-113HZZ1	STW-6(OCHIAI / 落合)	24	MSU-6GS
MSU-8GS	6	10	4	6	24	39	24	31	4.5	606HZZ1	STW-6(OCHIAI / 落合)	40	MSU-8GS

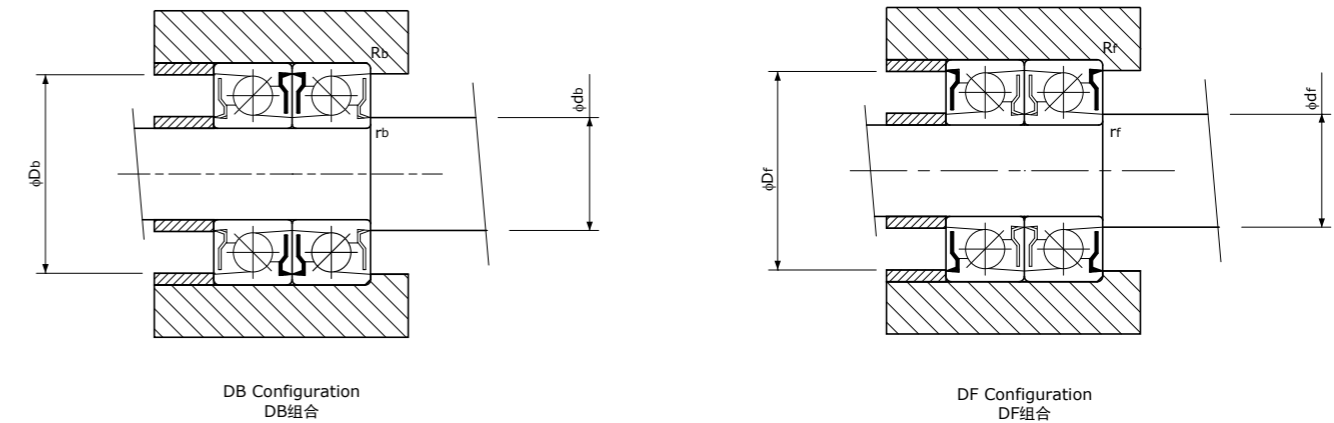
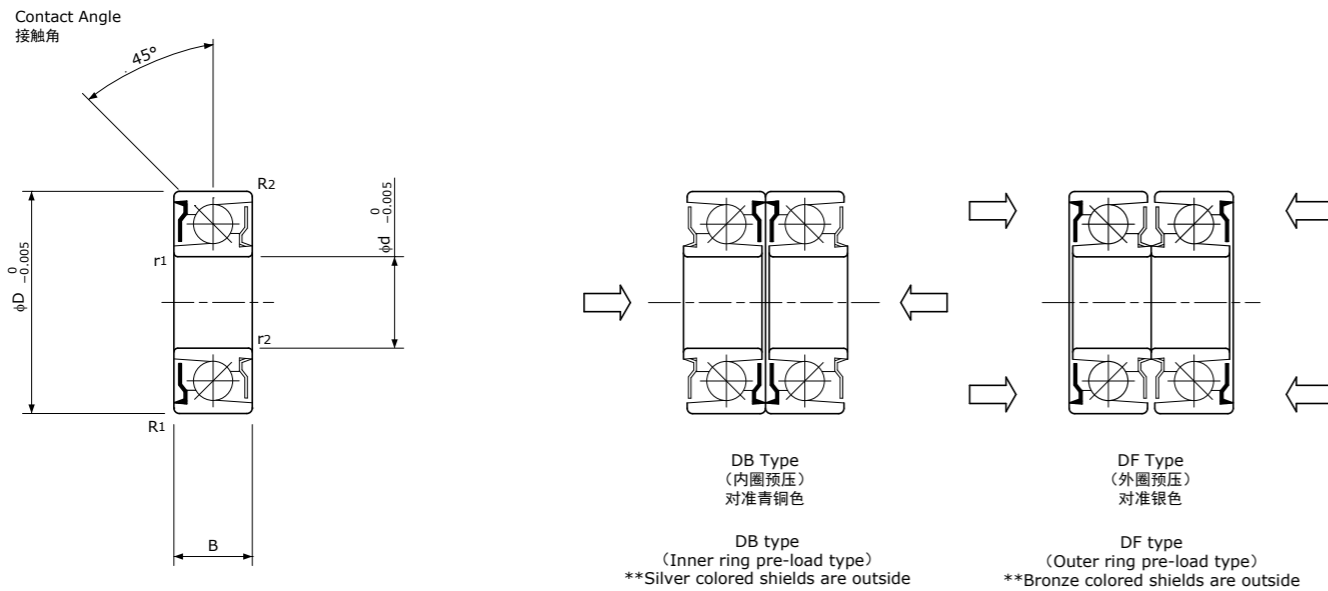
注1)深沟球轴承(ISC制)采用不锈钢材质, 并注入有低起尘润滑脂(NSK LG2), 是无尘规格的轴承。
注2)交货时使用的止动环可能会是同等规格的其他产品。

Note 1) Deep Groove Ball Bearing (manufactured by ISC) is designed for clean room use, it is made of Stainless steel with low contamination grease (NSK LG2) packed.

Note 2) Stop ring may be the equivalent one described in the table above.

Fixed side Ball Bearings for MSU series
MSU系列/固定侧轴承

Angular Contact Ball Bearings(Stainless type)
角接触球轴承(不锈钢规格)



公称型号的构成 / Model number notation

MTA 08 - 19 H P5 DF

① ② ③ ④ ⑤ ⑥

- ①系列符号 / ①Series No.
- ②轴承内径 (mm) / ②Inner diameter of Bearing (mm)
- ③轴承外径 (mm) / ③Outer diameter of Bearing (mm)
- ④材料符号 / ④Material
 - H : 不锈钢 / H : Stainless Steel
 - T : 轴承钢 / T : Bearing Steel
- ⑤精度等级 / ⑤Accuracy grade
 - 相当于P5 / Equivalent to P5
- ⑥组合类型 / ⑥Duplex type
 - DF : 正面组合 / DF : Face to Face duplex
 - DB : 背面组合 / DB : Back to Back duplex

推荐的紧固扭矩 / Recommended tightening torque

Unit(单位): N·cm (kgf·cm)

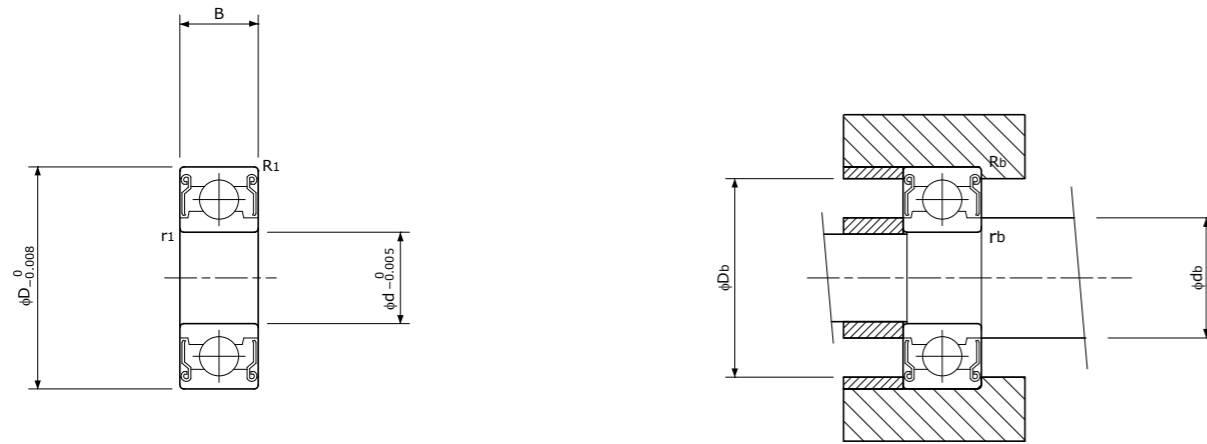
Type / 型号	DF type / DF型	DB type / DB型
MTA02-06HP5DF/DB	19.6(2.0)	9.8(1.0)
MTA03-08HP5DF/DB	19.6(2.0)	14.7(1.5)
MTA04-11HP5DF/DB	49(5.0)	19.6(2.0)
MTA05-13HP5DF/DB	49(5.0)	24.5(2.5)
MTA06-15HP5DF/DB	78.4(8.0)	29.4(3.0)
MTA08-19HP5DF/DB	78.4(8.0)	39.2(4.0)

Unit(单位): mm

Type 型号	Dimension / 主要尺寸							Basic Load Rating 基本额定负载		Limit Speed 许用转速 min ⁻¹	Abutment & Fillet / 推荐的安装尺寸								Mass 重量	Type 型号
	I.D. 内径 fd	O.D. 外径 fD	Width 宽度 B	Chamfer (min.) / 倒角尺寸(最小)				Ca (N)	Coa (N)		DF type / DF型				DB type / DB型					
				r1	r2	R1	R2				Df max. 最大	df min. 最小	Rf max. 最大	rf max. 最大	Db max. 最大	db min. 最小	Rb max. 最大	rb max. 最大		
MTA02-06HP5DF/DB	2	6	3	0.10	0.10	0.10	0.04	470	360	26,000	5.0	2.8	0.10	0.10	5.3	3.0	0.04	0.10	0.8	MTA02-06HP5DF/DB
MTA03-08HP5DF/DB	3	8	4	0.10	0.10	0.15	0.03	820	670	22,000	6.7	3.9	0.15	0.10	7.2	4.4	0.03	0.10	1.8	MTA03-08HP5DF/DB
MTA04-11HP5DF/DB	4	11	4.5	0.20	0.20	0.20	0.10	1250	1130	17,000	8.9	5.1	0.20	0.20	9.5	6.2	0.10	0.20	3.8	MTA04-11HP5DF/DB
MTA05-13HP5DF/DB	5	13	5	0.20	0.20	0.20	0.10	1780	1740	16,000	10.8	6.1	0.20	0.20	11.3	7.2	0.10	0.20	5.6	MTA05-13HP5DF/DB
MTA06-15HP5DF/DB	6	15	5.5	0.20	0.20	0.20	0.20	2350	2360	14,000	12.5	7.2	0.20	0.20	13.2	8.6	0.20	0.20	7.8	MTA06-15HP5DF/DB
MTA08-19HP5DF/DB	8	19	6.5	0.20	0.20	0.30	0.30	3400	3480	13,000	15.8	9.4	0.30	0.20	16.8	11.4	0.30	0.20	14.5	MTA08-19HP5DF/DB

注1) 角接触球轴承(ISC制)采用不锈钢材质,并注入有低起尘润滑脂(NSK LG2),是无尘规格的轴承。如有需要,也可提供普通材质(SUJ2)、加注有耐微动磨损润滑脂的产品。
 注2) 组合轴承时,请通过护板的颜色区分DF型或DB型(参照上图)。
 注3) 订货时,请指定组合类型(DF型或DB型)。
 注4) 仅销售组合轴承,不销售单品,敬请谅解!

Note 1) Angular Contact Ball Bearings (manufactured by ISC) are designed for clean room use, they are made of Stainless steel with low contamination grease (NSK LG2) packed.
 If necessary, Bearing steel type Angular Contact Ball Bearings with anti-fretting grease can be also provided.
 Note 2) Bearing duplex can be distinguished by the color of shield plate for each duplex, please refer to figure above.
 Note 3) Please designate duplex number (DF or DB), when you place order.
 Note 4) This series can be provided as sets of DF or DB configuration only.



Unit(单位):mm

Type 型号	Dimension / 主要尺寸					Basic Load Rating 基本额定负载		Limit Speed 许用转速 min^{-1}	Abutment & Fillet / 推荐的安装尺寸				Mass 重量 (g)	Type 型号
	I.D. 内径 ϕd	O.D. 外径 ϕD	Width 宽度 B	Chamfer (min.) / 倒角尺寸(最小)		C_r (N)	C_{or} (N)		D_b max. 最大	d_b min. 最小	R_b max. 最大	r_b max. 最大		
				r1	R1									
602HZZ	2	7	3.5	0.15	0.15	320	102	63,000	6.25	3.85	0.15	0.15	0.6	602HZZ
623HZZ	3	10	4	0.15	0.15	535	175	50,000	7.98	4.35	0.15	0.15	1.7	623HZZ
624HZZ	4	13	5	0.20	0.20	1110	390	40,000	11.35	6.0	0.20	0.20	3.1	624HZZ
B6-113HZZ1	6	15	6	0.20	0.20	1470	535	40,000	13.3	7.9	0.20	0.20	4.3	B6-113HZZ1
606HZZ1	6	17	6	0.30	0.30	1920	670	38,000	14.8	8.2	0.30	0.30	6.1	606HZZ1

注1)深沟球轴承(ISC制)采用不锈钢材质,并注入有低起尘润滑脂(NSK LG2),是无尘规格的轴承。

Note 1) Deep Groove Ball Bearings (manufactured by ISC) are designed for clean room use, they are made of Stainless steel with low contamination grease (NSK LG2) packed.