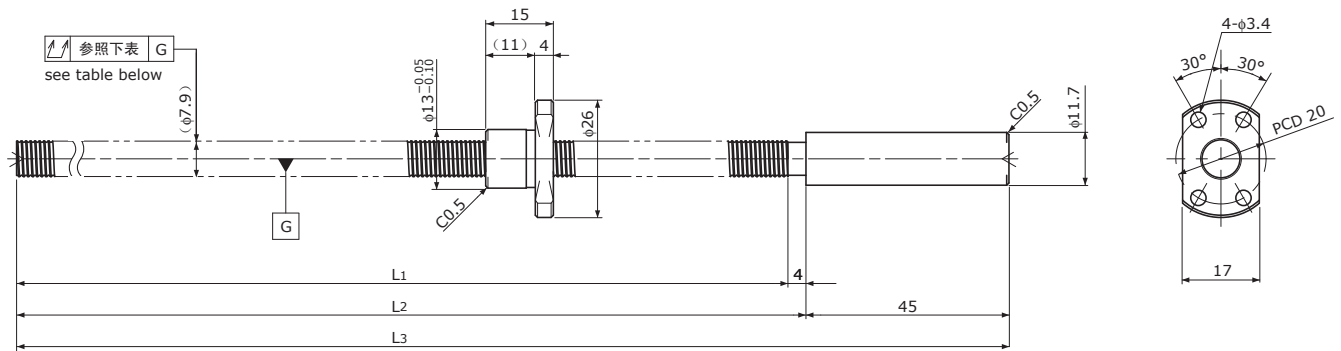


SRT0801K

Compact Nut / 紧凑型螺母

 Shaft dia.(轴径) $\phi 8$ Lead(导程) 1mm

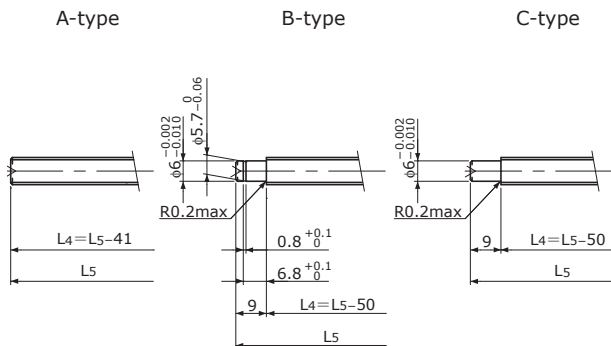
Ct7&Ct10



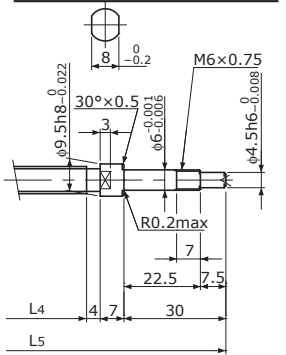
Unit(单位): mm

Ball Screw Specifications		主要技术参数
Ball size	钢珠直径	$\phi 0.8$
Number of thread	螺纹条数	1
Thread direction	螺纹旋向	Right 右旋
Shaft root dia.	丝杠轴底径	$\phi 7.3$
Number of circuit	循环数	1×3
Material	Shaft 轴	S55C+SUS303
	Nut 螺母	SCM415H
Surface hardness		HRC58~
螺纹部表面硬度		(Thread area)
Anti-rust treatment		Anti-rust oil
防锈处理		防锈油

End-journal profile 轴端加工形状 Supported-side 支撑侧



Fixed-side 固定侧


 L4: Thread length after end-journal machining. 追加加工后的螺纹部长度
 L5: Total length after end-journal machining. 追加加工后的总长

Support-unit Recommendation	Supported-side 支撑侧	Fixed-side 固定侧
推荐的支架组件	MSU-6CS/6GS, EF6	MSU-6C/6G, EK6

D-type : Other than the above. 上述以外的形状

Unit(单位): mm

Ball Screw Model	Travel	Grade	Shaft length			Lead accuracy		Total Run-out	Axial play	Preload Torque	Basic Load Rating	
			L1	L2	L3	Travel deviation	Variation				Dynamic	Static
滚珠丝杠型号	行程	精度	丝杠轴长度			导程精度		全跳动	轴向间隙	预压扭矩	额定动负载	额定静负载
						代表移动量误差	波动	μm		Nm	Ca	Coa
SRT0801K-171R220C7	150	Ct7	171	175	220	± 0.03	—	0.080	~0.020	—	650	1300
SRT0801K-171R220C10	150	Ct10	171	175	220	± 0.11	—	0.160	~0.050	—	650	1300

Note) Please refer to p-A287 for order code of end-journal machining. 注)追加加工的公称型号指定方式请参照p-A287.