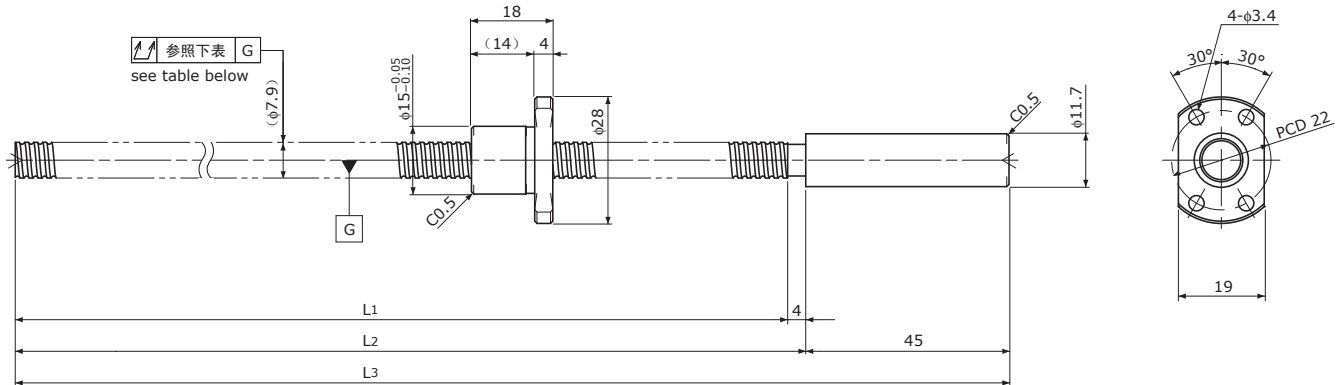


# SRT0802K

Compact Nut / 紧凑型螺母

 Shaft dia.(轴径) $\phi 8$  Lead(导程)2mm

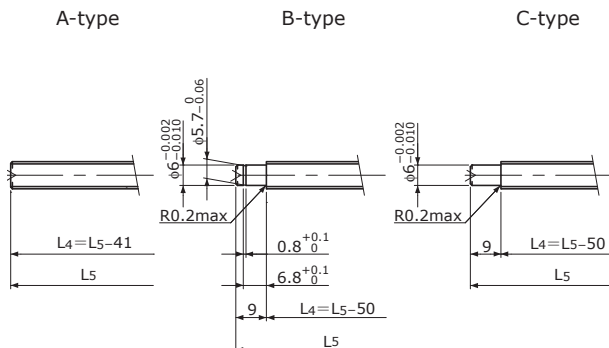
# Ct7&Ct10



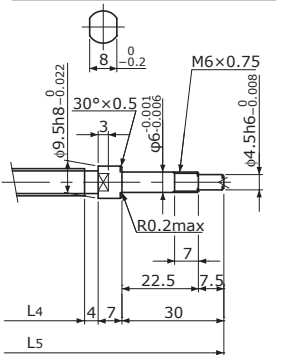
Unit(单位): mm

Ball Screw Specifications		主要技术参数
Ball size	钢珠直径	$\phi 1.2$
Number of thread	螺纹条数	1
Thread direction	螺纹旋向	Right 右旋
Shaft root dia.	丝杠轴底径	$\phi 7.0$
Number of circuit	循环数	1×3
Material 材质	Shaft 轴	S55C+SUS303
	Nut 螺母	SCM415H
Surface hardness 螺纹部表面硬度		HRC58~ (Thread area)
Anti-rust treatment 防锈处理		Anti-rust oil 防锈油

End-journal profile 轴端加工形状 Supported-side 支撑侧



Fixed-side 固定侧



L4: Thread length after end-journal machining. 追加加工后的螺纹部长度  
 L5: Total length after end-journal machining. 追加加工后的总长

Support-unit Recommendation	Supported-side 支撑侧	Fixed-side 固定侧
推荐的支架组件	MSU-6CS/6GS, EF6	MSU-6C/6G, EK6

D-type : Other than the above. 上述以外的形状

Unit(单位): mm

Ball Screw Model 滚珠丝杠型号	Travel 行程	Grade 精度	Shaft length 丝杠轴长度			Lead accuracy 导程精度		Total Run-out 全跳动	Axial play 轴向间隙	Preload Torque 预压扭矩 Nm	Basic Load Rating 基本额定负载 N	
			L <sub>1</sub>	L <sub>2</sub>	L <sub>3</sub>	Travel deviation 代表移动量误差 e <sub>p</sub>	Variation 波动 V <sub>300</sub>				Dynamic 额定动负载 Ca	Static 额定静负载 Coa
SRT0802K-171R220C7	145	Ct7	171	175	220	±0.03	—	0.080	~0.020	—	1300	2300
SRT0802K-171R220C10	145	Ct10	171	175	220	±0.11	—	0.160	~0.050			

Note) Please refer to p-A287 for order code of end-journal machining. 注)追加加工的公称型号指定方式请参照p-A287.