

SD4030B3

DC24V输入 2相微步驱动器

DC24V Input 2-phase Microstep Driver



DC24V

0.5~3 / 相
0.5~3A / phase

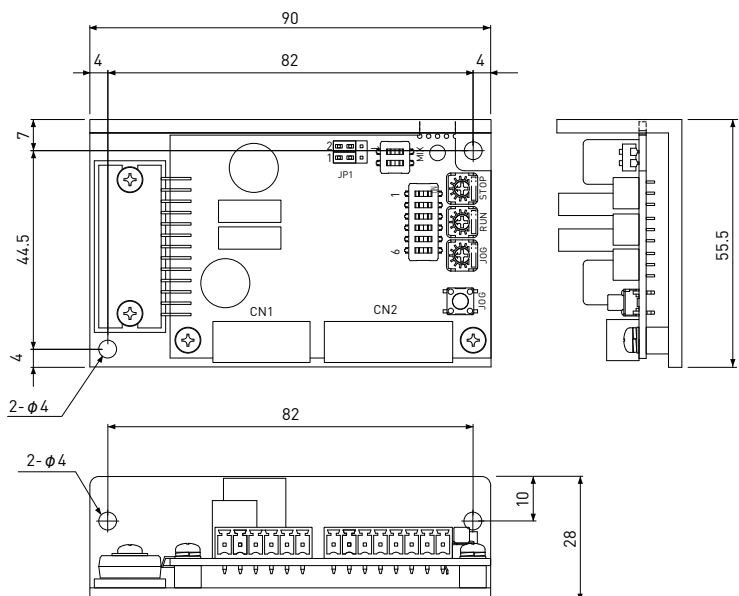
微型步进
Micro-step

电路板类型
Board type

规格 Specifications

项目 Items	内容 Description		备注 Note
输入电源电压 Input voltage	DC+18V~36V		
输出电流 Output current	0.5~3Apeak(±5%)/相 0.5~3Apeak(±5%)/phase		电源超过24V时会降额 Being lower rated output current beyond Power Supply 24V
驱动方式 Drive method	双极恒电流斩波方式 Chopper mode by Bipolar constant current		也可使用单极型 It can be used for uni-polar type.
电流下降功能 Current down function	电流自动下降 脉冲停止约0.7秒后,电流下降至CDN旋钮设定的电流 Auto Current down Adjusting to set lower current of CDN volume after 0.7 second after pulse stop		可通过开关选择功能 Selectable by switch.
最大输入脉冲频率 Maximum input pulse cycle	200Kpps		
调整功能 Adjusting	RUN	励磁电流设定用(0.5~3A) For excitation current	出厂时设定为2A The default factory setting is 2A.
	STOP	用于设定电流下降时的电流 For current down value on current down mode.	RUN电流的10%~60% Selectable between 10% to 60% of RUN current.
	MIX	用于设定混合衰减率(0%、20%、40%、80%) Mixed Decay ratio(0%、20%、40%、80%)	出厂时设定为80% The default factory setting is 80%
	JOG	用于设定JOG速度 For JOG speed setting.	300pps~14Kpps
选择功能 Select function	SW-1,2,3	插值数选择 Select of Resolutions	1/2, 1/8, 1/10, 1/16, 1/20, 1/32, 1/40, 1/64
	SW-4	自动电流下降有效/无效选择 ON/OFF for function of auto current down mode.	开关ON时有效、OFF时无效,出厂时设为“有效” Switch ON is active and OFF is no active. The default factory setting is ON.
	SW-5,6	JOG选择功能 Select of JOG function	SW-5ON时JOG有效.SW-6 ON: CW, OFF: CCW SW-5 ON is active for JOG, SW6 ON is CW, OFF is CCW
输入信号 Input signals	P+,P-	指令脉冲 Pulse Command	指令脉冲可选择1脉冲或2脉冲。 Selection of 1 pulse an 2 pulse for pulse command.
	D+,D-	指令方向 Direction Command	通过光电耦合器进行输入绝缘 Isolated by photo coupler
	OFF+,OFF-	励磁OFF No excitation	
输出信号 Output signals	ALM+,ALM-	警报(检测出功率元件过热) 功率元件内的温度达到170°C(Typ.)时输出 Alarm (Prospecting of over-heat for Power device) Output at over 170°C(Typ.) of power device	通过光电耦合器绝缘,正常时为ON、报警时为OFF Photo Isolation, ON is active, OFF is no active (ALARM).
外形尺寸 Dimension	W90×D55.5×H28		
工作环境温度、湿度 Operating Temperature and Humidity	0~40°C、35~80% RH		无结露 No condensation
存放环境温度、湿度 Storage Temperature and Humidity	-20~+85°C、35~80% RH		无结露 No condensation
重量 Mass	约112g Approximately112g		

器外形尺寸 / Driver Outer Dimensions



Stepping Motor Driver
步进电机驱动器