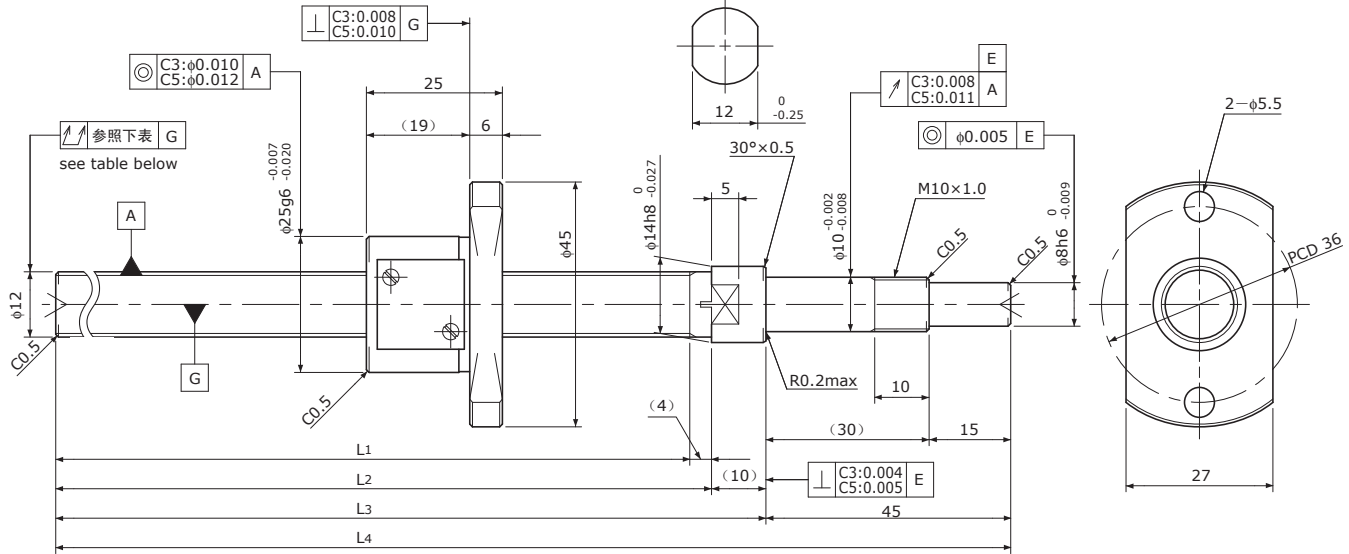


SG1202

Shaft dia.(轴径) $\phi 12$ Lead(导程) 2mm

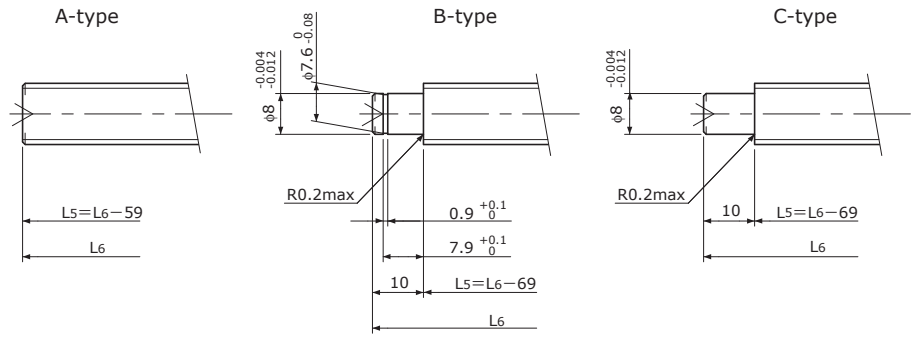
C3&C5



Unit(单位): mm

Ball Screw Specifications 主要技术参数	
Ball size 钢珠直径	$\phi 1.5875$
Number of thread 螺纹条数	1
Thread direction 螺纹旋向	Right 右旋
Shaft root dia. 丝杠轴底径	$\phi 10.6$
Number of circuit 循环数	3.7×1
Shaft, Nut material 轴、螺母材质	SCM415H
Surface hardness 螺纹部表面硬度	HRC58~62 (Thread area)
Anti-rust treatment 防锈处理	Anti-rust oil 防锈油

Supported-side end-journal profile 支撑侧轴端加工形状



L5: Thread length after end-journal machining. 追加加工后的螺纹部长度
L6: Total length after end-journal machining. 追加加工后的总长

Support-unit Recommendation 推荐的支架组件	Supported-side 支撑侧	Fixed-side 固定侧
	EF10	EK10

D-type: Other than the above. 上述以外的形状

Unit(单位): mm

Ball Screw Model 滚珠丝杠型号	Travel 行程	Grade 精度	Shaft length 丝杠轴长度				Lead accuracy 导程精度		Total Run-out 全跳动	Axial play 轴向间隙	Preload Torque 预压扭矩 Nm	Basic Load Rating 基本额定负载 N	
			L ₁	L ₂	L ₃	L ₄	Travel deviation 代表移动量误差 e _p	Variation 波动 V _u				Dynamic 额定动负载 Ca	Static 额定静负载 Coa
SG1202-141R200C3	115	C3	141	145	155	200	± 0.010	0.008	0.035	0 Spacer Ball 间隔钢珠 (1:1)	0.008~0.040	1900	3200
SG1202-191R250C3	165	C3	191	195	205	250	± 0.010	0.008	0.040				
SG1202-241R300C3	215	C3	241	245	255	300	± 0.012	0.008	0.040				
SG1202-291R350C3	265	C3	291	295	305	350	± 0.012	0.008	0.050				
SG1202-341R400C3	315	C3	341	345	355	400	± 0.013	0.010	0.050	~0.005	—	3000	6400
SG1202-141R200C5	115	C5	141	145	155	200	± 0.020	0.018	0.040				
SG1202-191R250C5	165	C5	191	195	205	250	± 0.020	0.018	0.055				
SG1202-241R300C5	215	C5	241	245	255	300	± 0.023	0.018	0.055				
SG1202-291R350C5	265	C5	291	295	305	350	± 0.023	0.018	0.065				
SG1202-341R400C5	315	C5	341	345	355	400	± 0.025	0.020	0.065				

Note) Please refer to p-A206 for order code of end-journal machining. 注) 追加加工的公称型号指定方式请参照p-A206.