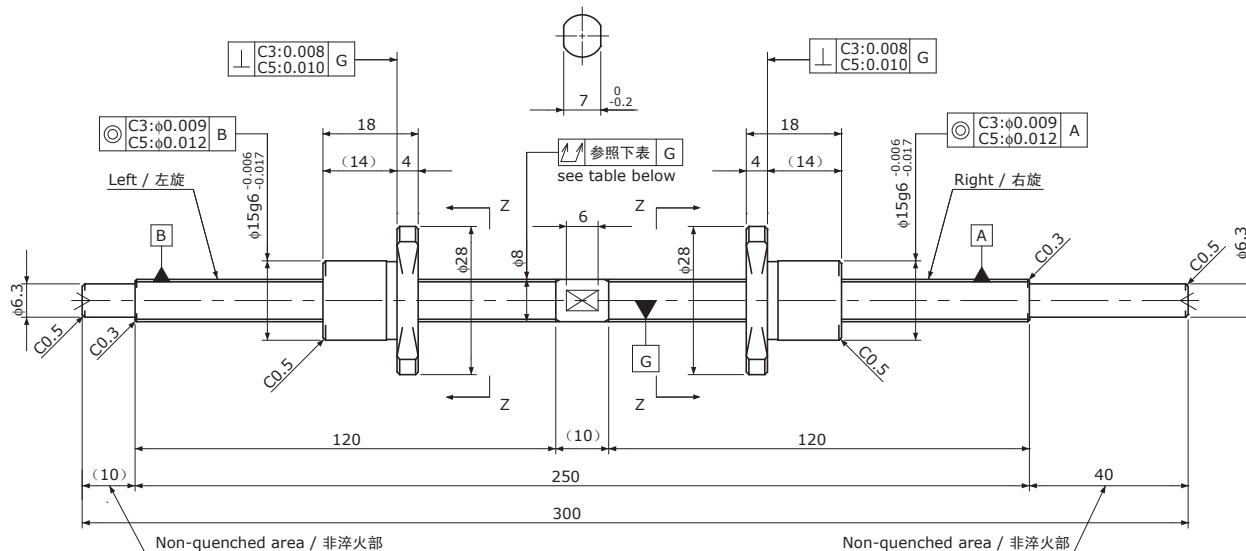


# SD0802

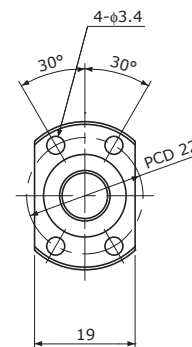
 Shaft dia.(轴径) $\phi 8$  Lead(导程)2mm

# C3&C5



Unit(单位): mm

Ball Screw Specifications 主要技术参数	
Ball size 钢珠直径	$\phi 1.2$
Number of thread 螺纹条数	1
Thread direction 螺纹旋向	Left&Right 左右
Shaft root dia. 丝杠轴底径	$\phi 7.0$
Number of circuit 循环数	1×3
Shaft,Nut material 轴、螺母材质	SCM415H
Surface hardness 螺纹部表面硬度	HRC58~62 (Thread area)
Anti-rust treatment 防锈处理	Anti-rust oil 防锈油


 Vies Z-Z  
 Z-Z向视图

Unit(单位): mm

Ball Screw Model 滚珠丝杠型号	Travel 行程	Grade 精度	Lead accuracy 导程精度		Total Run-out 全跳动 $\uparrow$	Axial play 轴向间隙	Preload Torque 预压扭矩 Nm	Basic Load Rating 基本额定负载 N	
			Travel deviation 代表移动量误差 $e_p$	Variation 波动 $V_u$				Dynamic 额定动负载 $C_a$	Static 额定静负载 $C_{0a}$
SD0802-120L120R300C3	100	C3	$\pm 0.010$	0.008	0.050	0	~0.020	1300	2300
SD0802-120L120R300C5	100	C5	$\pm 0.020$	0.018	0.065	~0.005	—		

Note 1) Please designate end-journal profile with your sketch.

Note 2) Absolute position of both Nuts related to the Screw Shaft is not under the control.

注1)轴端的追加加工请结合图纸进行指示。

注2)未规定左右螺母相对于丝杠轴的绝对位置。