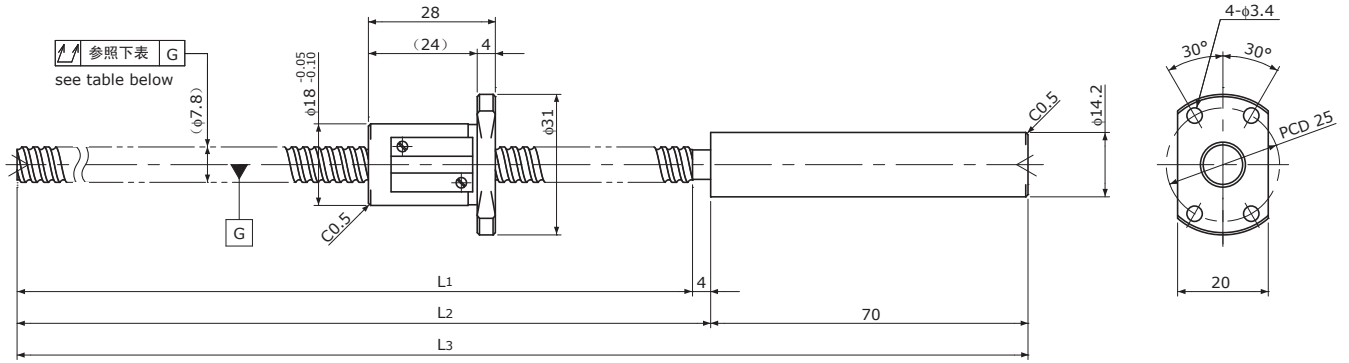


# SRT0805

 Shaft dia.(轴径) $\phi 8$  Lead(导程)5mm

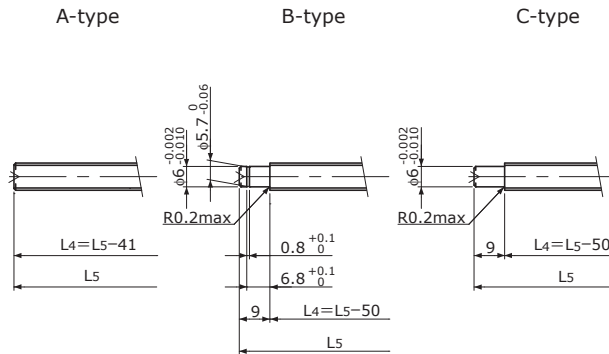
Ct7&amp;Ct10



Unit(单位): mm

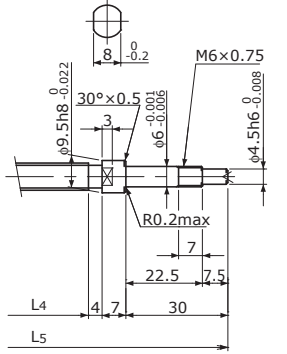
Ball Screw Specifications		主要技术参数
Ball size	钢珠直径	$\phi 1.5875$
Number of thread	螺纹条数	1
Thread direction	螺纹旋向	Right 右旋
Shaft root dia.	丝杠轴底径	$\phi 6.6$
Number of circuit	循环数	$2.7 \times 1$
Material 材质	Shaft 轴	SCM415H+SUS303
	Nut 螺母	SCM415H
Surface hardness 螺纹部表面硬度		HRC58~ (Thread area)
Anti-rust treatment 防锈处理		Anti-rust oil 防锈油

End-journal profile 轴端加工形状 Supported-side 支撑侧



L4: Thread length after end-journal machining. 追加加工后的螺纹部长度  
 L5: Total length after end-journal machining. 追加加工后的总长

Fixed-side 固定侧



Support-unit Recommendation	Supported-side	支撑侧	固定侧
推荐的支架组件	MSU-6CS/6GS, EF6		MSU-6C/6G, EK6

D-type : Other than the above. 上述以外的形状

Unit(单位): mm

Ball Screw Model 滚珠丝杠型号	Travel 行程	Grade 精度	Shaft length 丝杠轴长度			Lead accuracy 导程精度		Total Run-out 全跳动	Axial play 轴向间隙	Preload Torque 预压扭矩 Nm	Basic Load Rating 基本额定负载 N	
			L <sub>1</sub>	L <sub>2</sub>	L <sub>3</sub>	Travel deviation 代表移动量误差 e <sub>p</sub>	Variation 波动 V <sub>300</sub>				Dynamic 额定动负载 Ca	Static 额定静负载 Coa
SRT0805-196R270C7	165	Ct7	196	200	270	$\pm 0.03$	—	0.080	~0.020	—	1850	3000
SRT0805-356R430C7	325	Ct7	356	360	430	$\pm 0.06$	0.05	0.120				
SRT0805-196R270C10	165	Ct10	196	200	270	$\pm 0.13$	—	0.160	~0.050	—	1850	3000
SRT0805-356R430C10	325	Ct10	356	360	430	$\pm 0.24$	0.21	0.240				

Note) Please refer to p-A287 for order code of end-journal machining. 注)追加加工的公称型号指定方式请参照p-A287.