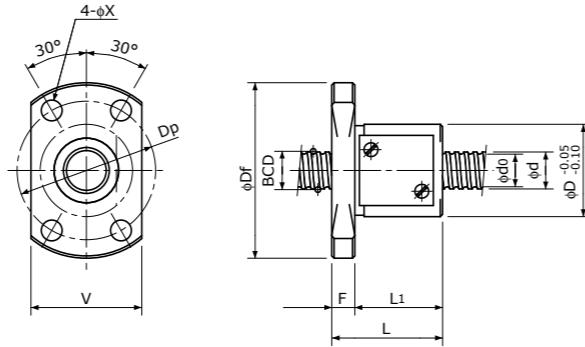
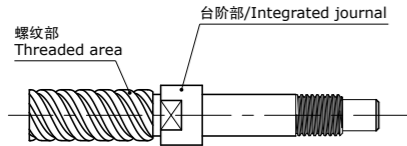


Rolled Ball Screws 冷轧滚珠丝杠

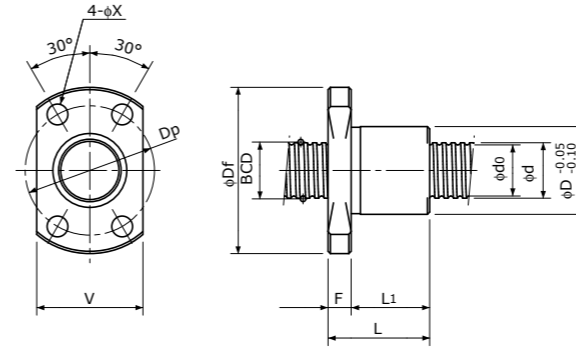
Single Nut with Flange 带法兰单螺母

Backlash type 齿侧间隙型

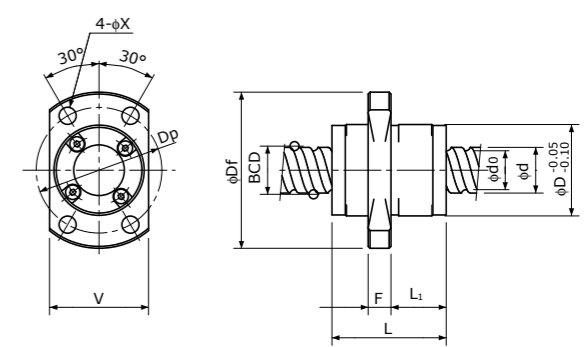
- 也可生产对轴端直径进行了加粗设计的台阶型冷轧加工（下图），详情请垂询本公司。（轴端直径φ12以下）
- Rolled Ball Screws with integrated journal are available (φ12 or less only), which have larger diameter than threaded area shown below.



Type-1: Return-plate type
复式回路板循环方式



Type-2: End-deflector type
偏转器式循环方式



Type-3: End-cap type or End-deflector type
端盖循环方式或偏转器式循环方式

Unit (单位): mm

Ball Nut Model number 螺母型号	Shaft nominal dia. 丝杠轴公称外径 d	Lead 导程	Ball size 丝杠直径	BCD 钢珠中心直径	Lead angle 导程角	Root dia. 底径 d ₀	Number of Circuit 循环数	Basic Load Rating 基本额定负载 N		Nut Rigidity 螺母刚性 N/μm	Nut dimension 螺母尺寸									Ball Nut Model number 螺母型号	
								Dynamic 额定动负载 Ca	Static 额定静负载 Coa		Nut type 螺母类型	D	Df	L	L ₁	F	W	V	Dp		Bolt Hole 安装孔 X
MRB 1002 **	10	2	1.5875	10.30	3° 32'	8.6	3.7×1	2700	5300	134	1	23	40	24	19	5	—	25	32	4.5	MRB 1002 **
MRB 1002K	10	2	1.2	10.30	3° 32'	9.0	1×3	1450	3000	93	2	17	34	19	14	5	—	21	26	4.5	MRB 1002K
MRB 1003	10	3	2.0	10.30	5° 18'	8.2	3.7×1	3900	7200	140	1	24	41	29	24	5	—	26	33	4.5	MRB 1003
MRB 1004	10	4	2.0	10.30	7° 03'	8.2	2.7×1	3000	5200	104	1	24	41	28	23	5	—	26	33	4.5	MRB 1004
MRB 1005	10	5	2.0	10.30	8° 47'	8.2	2.7×1	3000	5200	103	2	23	40	26	21	5	—	25	32	4.5	MRB 1005
MRB 1006	10	6	2.0	10.30	10° 30'	8.2	2.7×1	3000	5000	102	1	26	42	33	28	5	—	28	34	4.5	MRB 1006
MRB 1010	10	10	2.0	10.50	16° 52'	8.4	1.6×2	3300	5900	117	3	23	40	24	13	5	—	25	32	4.5	MRB 1010
MRB 1012	10	12	2.0	10.50	19° 59'	8.4	1.6×2	3300	6200	115	3	23	40	28	17	5	—	25	32	4.5	MRB 1012
MRB 1015	10	15	2.0	10.50	24° 27'	8.4	1.6×2	3300	6400	110	3	23	40	33	22	5	—	25	32	4.5	MRB 1015
MRB 1020	10	20	1.5875	10.40	31° 28'	8.7	0.7×4	2100	4000	88	3	20	37	23	13	5	—	22	29	4.5	MRB 1020
MRB 1202	12	2	1.5875	12.30	2° 58'	10.6	3.7×1	3000	6400	156	1	25	42	24	19	5	—	27	34	4.5	MRB 1202
MRB 1202K	12	2	1.2	12.30	2° 58'	11.0	1×3	1600	3700	109	2	19	36	19	14	5	—	23	28	4.5	MRB 1202K
MRB 1210	12	10	2.381	12.65	14° 07'	10.2	1.7×2	5100	9800	152	3	24	41	30	14.5	6	—	26	33	4.5	MRB 1210

注1) 标准螺纹旋向为右旋。
 注2) 设计时, 由于生产及组装螺母的关系, 请使滚珠丝杠的两个轴端不超过丝杠轴直径。需要单侧台阶型时, 请垂询本公司。
 注3) 标准螺母不带密封。不能安装密封, 敬请注意。
 注4) 刚性
 表中的刚性值, 是在相当于基本额定动负载Ca的30%的轴向负载作用时, 根据轴向弹性位移量计算的理论值。轴向负载与上述条件不同时, 可通过p-A823的公式计算。
 注5) 不锈钢冷轧滚珠丝杠
 螺母型号后带**者可提供不锈钢冷轧滚珠丝杠。

Note 1) All models are Right-hand screw.
 Note 2) The diameter of the Screw Shaft both ends must be less than the Screw Shaft Root diameter, because of production and Nut assembly reason. If bigger end-journal than Shaft diameter is required, please consult KSS.
 Note 3) Ball Nut dimension is without seal at the both ends. All type of Ball Nuts cannot equip with seals.
 Note 4) Rigidity
 The Rigidity values shown in the table are theoretical values calculated from the amount of Elastic Displacement under the Axial load equivalent to 30% of the Basic Dynamic Load Rating Ca. For Axial load condition other than the above, see the formula in p-A823, you can calculate Rigidity using this formula.
 Note 5) Stainless Rolled Ball Screw
 Stainless Rolled Ball Screw is available for Ball Nut Model Number marked **.