

# MRH-BP2系列(接单生产)

## MRH-BP2 series (Customized Products)

### ●尺寸表 Dimension table

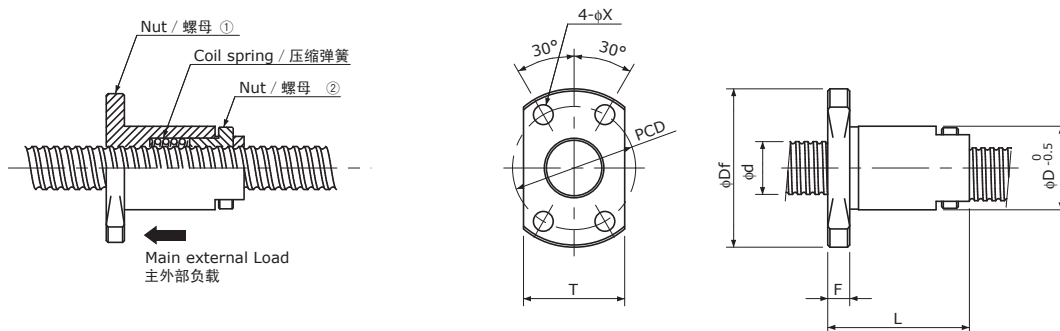
公称型号的构成 Model number notation

**MRH** **06** **02** **B** **P2** — **300** **R** **300**

① ② ③ ④ ⑤ ⑥ ⑦ ⑧

- ①螺母类型符号
- ②丝杠轴公称外径(mm)
- ③导程(mm)
- ④法兰形状  
B : 双面切割(4孔)
- ⑤无齿隙符号  
P2 : 标准设定
- ⑥螺纹部长度(mm)
- ⑦螺纹旋向(仅右旋)
- ⑧丝杠轴总长(mm)

- ①Nut model
- ②Screw Shaft nominal diameter(mm)
- ③Lead(mm)
- ④Flange configuration  
B : 2 flat faces(4 holes)
- ⑤Backlash free mark  
P2 : Standard Preload
- ⑥Screw thread length(mm)
- ⑦Thread direction(Right-hand only)
- ⑧Screw Shaft total length(mm)



Unit(单位): mm

Model 型号	Screw Shaft 丝杠轴				Nut 螺母							Standard Shaft length 标准轴长
	Dia. 公称直径 d	Lead 导程	Root dia. 底径	No. of threads 螺纹条数	D	L	Df	F	P.C.D	X	T	
MRH0602BP2	6	2	5.1	1	13	20	26	4	20	3.6	17	300
MRH0606BP2		6	5.2	2								
MRH0609BP2		9	5.3	4								
MRH0802BP2	8	2	6.6	1	15	23	28	4	22	3.6	19	400
MRH0805BP2		5	6.6	2								
MRH0808BP2		8	6.7	2								
MRH0812BP2		12	6.7	4								
MRH1002BP2	10	2	8.6	1	18	30	31	5	25	3.6	20	500
MRH1006BP2		6	8.4	2								
MRH1010BP2		10	8.4	2								
MRH1015BP2		15	8.4	4								
MRH1020BP2		20	8.7	4								
MRH1202BP2	12	2	10.6	1	23	38	41	5	33	4.8	25	600
MRH1206BP2		6	10.4	2								
MRH1210BP2		10	10.4	2								
MRH1220BP2		20	10.4	6								
MRH1230BP2		30	10.4	8								

- 注1)建议由本公司进行丝杠轴的追加加工。  
如果由其他公司进行追加加工,本公司将不能保证追加加工后的精度,敬请谅解。
- 注2)请将丝杠轴的轴端直径指定为不超过丝杠轴底径,并以1mm为单位指定丝杠长度。
- 注3)螺纹旋向仅为右旋。
- 注4)丝杠轴、螺母不单售。
- 注5)希望变更弹簧压力(小于或大于标准)时,请另行联系。
- 注6)建议按上图箭头所示方向使用主外部负载。

- Note 1) Additional machining of Screw Shafts should be performed by KSS. Note that accuracy cannot be guaranteed if additional machining is performed by someone other than KSS.
- Note 2) The Shaft end diameter should be smaller than the Screw Shaft Root diameter, and the Screw thread length should be specified in 1mm units.
- Note 3) Only Right-hand thread is available.
- Note 4) Screw Shafts and Nuts are not sold separately.
- Note 5) Please inquire regarding spring tension (lower or higher than standard is available).
- Note 6) It is recommended that the main external load is in the direction as indicated by the arrow in the Figure above.