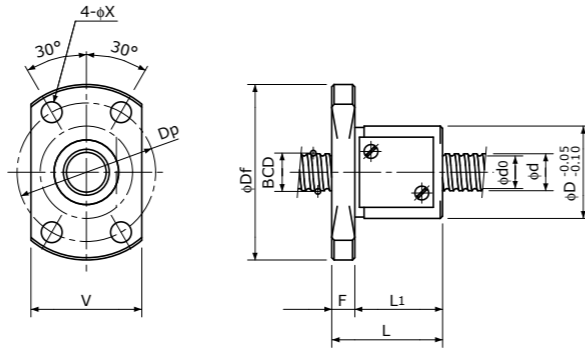
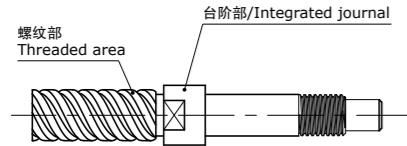


# Rolled Ball Screws 冷轧滚珠丝杠

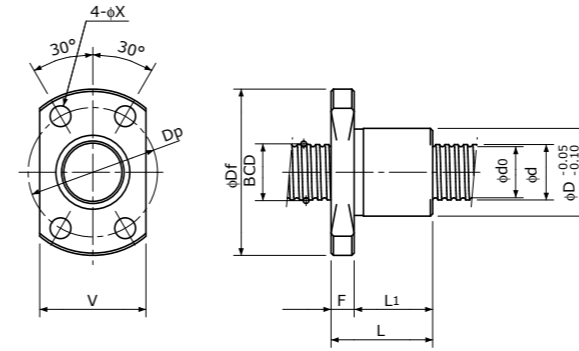
## Single Nut with Flange 带法兰单螺母

## Backlash type 齿侧间隙型

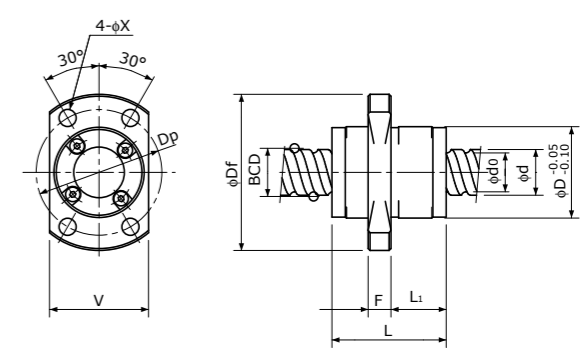
- 也可生产对轴端直径进行了加粗设计的台阶型冷轧加工（下图），详情请垂询本公司。（轴端直径 $\phi 12$ 以下）
- Rolled Ball Screws with integrated journal are available ( $\phi 12$  or less only), which have larger diameter than threaded area shown below.



Type-1: Return-plate type  
复式回路板循环方式



Type-2: End-deflector type  
偏转器式循环方式



Type-3: End-cap type or End-deflector type  
端盖循环方式或偏转器式循环方式

Unit (单位): mm

Ball Nut Model number 螺母型号	Shaft nominal dia. 丝杠轴公称外径 d	Lead 导程	Ball size 丝杠直径	BCD 钢珠中心直径	Lead angle 导程角	Root dia. 底径 d <sub>0</sub>	Number of Circuit 循环数	Basic Load Rating 基本额定负载 N		Nut Rigidity 螺母刚性 N/μm	Nut dimension 螺母尺寸									Ball Nut Model number 螺母型号	
								Dynamic 额定动负载 Ca	Static 额定静负载 Coa		Nut type 螺母类型	D	Df	L	L <sub>1</sub>	F	W	V	Dp		Bolt Hole 安装孔 X
MRB 0401	4	1	0.8	4.15	4° 23'	3.3	3.7×1	560	790	54	1	11	23	17	13	4	—	15	17	3.4	MRB 0401
MRB 0401K	4	1	0.6	4.15	4° 23'	3.4	1×3	300	430	38	2	9	19	13	10	3	—	13	14	2.9	MRB 0401K
MRB 0402	4	2	0.8	4.15	8° 43'	3.3	2.7×1	420	570	39	1	11	23	19	15	4	—	15	17	3.4	MRB 0402
MRB 0504	5	4	0.8	5.15	13° 53'	4.3	2.7×1	470	720	47	1	12	24	22	18	4	—	16	18	3.4	MRB 0504
MRB 0601**	6	1	0.8	6.15	2° 58'	5.3	3.7×1	680	1200	75	1	13	26	17	13	4	—	16	20	3.4	MRB 0601**
MRB 0601K	6	1	0.8	6.20	2° 56'	5.3	1×3	560	950	55	2	11	23	14.5	11	3.5	—	15	17	3.4	MRB 0601K
MRB 0602	6	2	1.0	6.20	5° 52'	5.1	2.7×1	750	1200	58	1	15	28	17	13	4	—	19	22	3.4	MRB 0602
MRB 0606	6	6	1.0	6.30	16° 52'	5.2	1.6×2	870	1450	67	3	14	27	17	8	4	—	16	21	3.4	MRB 0606
MRB 0610	6	10	1.2	6.30	26° 48'	5.0	1.2×2	950	1600	50	3	14	27	23	11.5	4	—	16	21	3.4	MRB 0610

- 注1) 标准螺纹旋向为右旋。  
 注2) 设计时，由于生产及组装螺母的关系，请使滚珠丝杠的两个轴端不超过丝杠轴底径。需要单侧台阶型时，请垂询本公司。  
 注3) 标准螺母不带密封。不能安装密封，敬请注意。  
 注4) 刚性  
 表中的刚性值，是在相当于基本额定动负载Ca的30%的轴向负载作用时，根据轴向弹性位移量计算的理论值。轴向负载与上述条件不同时，可通过p-A823的公式计算。  
 注5) 不锈钢冷轧滚珠丝杠  
 螺母型号后带\*\*者可提供不锈钢冷轧滚珠丝杠。

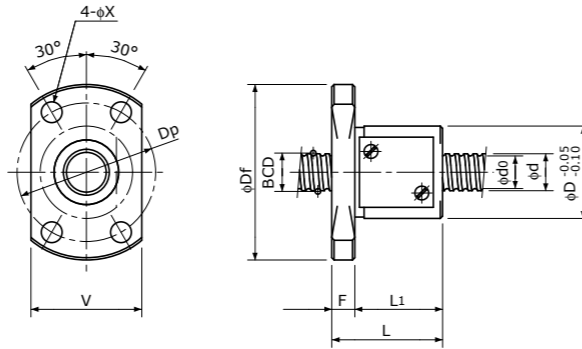
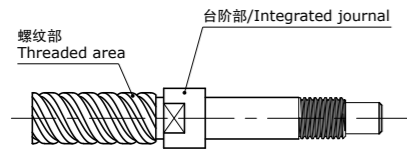
- Note 1) All models are Right-hand screw.  
 Note 2) The diameter of the Screw Shaft both ends must be less than the Screw Shaft Root diameter, because of production and Nut assembly reason. If bigger end-journal than Shaft diameter is required, please consult KSS.  
 Note 3) Ball Nut dimension is without seal at the both ends. All type of Ball Nuts cannot equip with seals.  
 Note 4) Rigidity  
 The Rigidity values shown in the table are theoretical values calculated from the amount of Elastic Displacement under the Axial load equivalent to 30% of the Basic Dynamic Load Rating Ca.  
 For Axial load condition other than the above, see the formula in p-A823, you can calculate Rigidity using this formula.  
 Note 5) Stainless Rolled Ball Screw  
 Stainless Rolled Ball Screw is available for Ball Nut Model Number marked \*\*.

# Rolled Ball Screws 冷轧滚珠丝杠

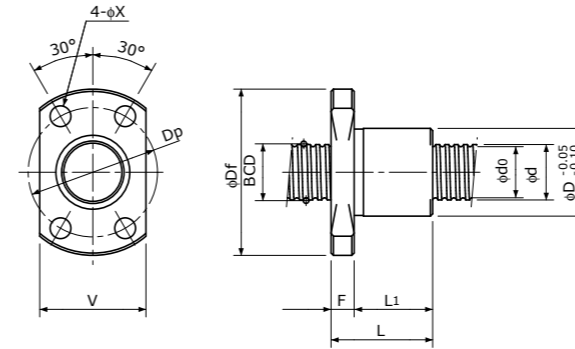
## Single Nut with Flange 带法兰单螺母

Backlash type  
齿侧间隙型

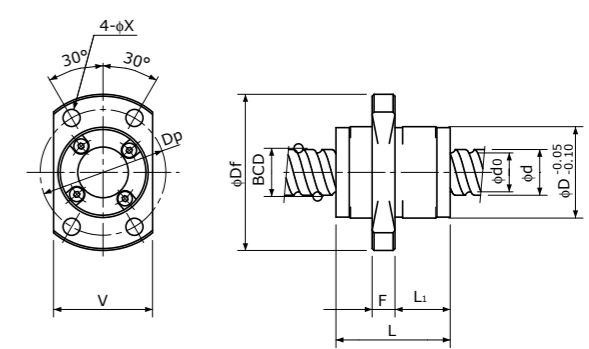
- 也可生产对轴端直径进行了加粗设计的台阶型冷轧加工（下图），详情请垂询本公司。（轴端直径 $\phi 12$ 以下）
- Rolled Ball Screws with integrated journal are available ( $\phi 12$  or less only), which have larger diameter than threaded area shown below.



Type-1: Return-plate type  
复式回路板循环方式



Type-2: End-deflector type  
偏转器式循环方式



Type-3: End-cap type or End-deflector type  
端盖循环方式或偏转器式循环方式

Unit (单位): mm

Ball Nut Model number 螺母型号	Shaft nominal dia. 丝杠轴公称外径 d	Lead 导程	Ball size 丝杠直径	BCD 钢珠中心直径	Lead angle 导程角	Root dia. 底径 d <sub>0</sub>	Number of Circuit 循环数	Basic Load Rating 基本额定负载 N		Nut Rigidity 螺母刚性 N/μm	Nut dimension 螺母尺寸									Ball Nut Model number 螺母型号	
								Dynamic 额定动负载 Ca	Static 额定静负载 Coa		Nut type 螺母类型	D	Df	L	L <sub>1</sub>	F	W	V	Dp		Bolt Hole 安装孔 X
MRB 0801 **	8	1	0.8	8.15	2°15'	7.3	3.7×1	780	1650	95	1	16	29	17	13	4	—	18	23	3.4	MRB 0801 **
MRB 0801K	8	1	0.8	8.20	2°13'	7.3	1×3	650	1300	70	2	13	26	15	11	4	—	17	20	3.4	MRB 0801K
MRB 0802 **	8	2	1.5875	8.30	4°23'	6.6	3.7×1	2400	4100	111	1	20	37	24	19	5	—	22	29	4.5	MRB 0802 **
MRB 0802K	8	2	1.2	8.30	4°23'	7.0	1×3	1300	2300	77	2	15	28	18	14	4	—	19	22	3.4	MRB 0802K
MRB 0802.5	8	2.5	1.5875	8.00	5°41'	6.3	2.7×1	1850	3000	80	2	16	29	16	12	4	—	18	23	3.4	MRB 0802.5
MRB 0805	8	5	1.5875	8.30	10°51'	6.6	2.7×1	1850	3000	82	1	18	31	28	24	4	—	20	25	3.4	MRB 0805
MRB 0808	8	8	1.5875	8.40	16°52'	6.7	1.6×2	2200	3800	95	3	18	31	20	10	4	—	20	25	3.4	MRB 0808
MRB 0810	8	10	1.5875	8.40	20°45'	6.7	1.6×2	2200	3800	92	3	18	31	24	13	4	—	20	25	3.4	MRB 0810
MRB 0812	8	12	1.5875	8.40	24°27'	6.7	1.6×2	2200	4000	90	3	18	31	27	17	4	—	20	25	3.4	MRB 0812

- 注1) 标准螺纹旋向为右旋。  
 注2) 设计时，由于生产及组装螺母的关系，请使滚珠丝杠的两个轴端不超过丝杠轴底径。需要单侧台阶型时，请垂询本公司。  
 注3) 标准螺母不带密封。不能安装密封，敬请注意。  
 注4) 刚性  
 表中的刚性值，是在相当于基本额定动负载Ca的30%的轴向负载作用时，根据轴向弹性位移量计算的理论值。轴向负载与上述条件不同时，可通过p-A823的公式计算。  
 注5) 不锈钢冷轧滚珠丝杠  
 螺母型号后带\*\*者可提供不锈钢冷轧滚珠丝杠。

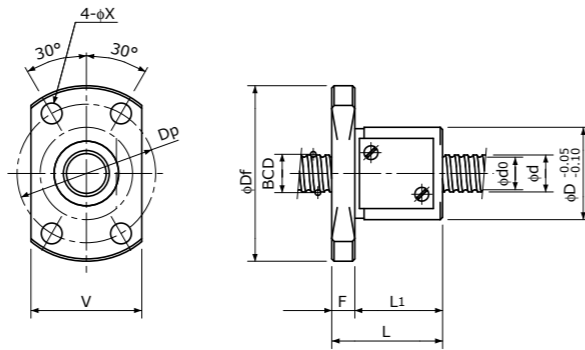
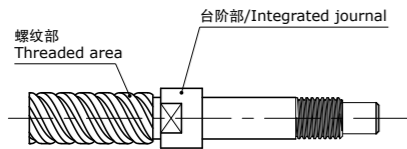
- Note 1) All models are Right-hand screw.  
 Note 2) The diameter of the Screw Shaft both ends must be less than the Screw Shaft Root diameter, because of production and Nut assembly reason. If bigger end-journal than Shaft diameter is required, please consult KSS.  
 Note 3) Ball Nut dimension is without seal at the both ends. All type of Ball Nuts cannot equip with seals.  
 Note 4) Rigidity  
 The Rigidity values shown in the table are theoretical values calculated from the amount of Elastic Displacement under the Axial load equivalent to 30% of the Basic Dynamic Load Rating Ca.  
 For Axial load condition other than the above, see the formula in p-A823, you can calculate Rigidity using this formula.  
 Note 5) Stainless Rolled Ball Screw  
 Stainless Rolled Ball Screw is available for Ball Nut Model Number marked \*\*.

# Rolled Ball Screws 冷轧滚珠丝杠

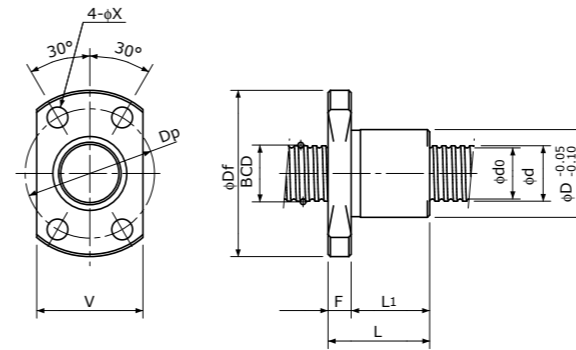
## Single Nut with Flange 带法兰单螺母

## Backlash type 齿侧间隙型

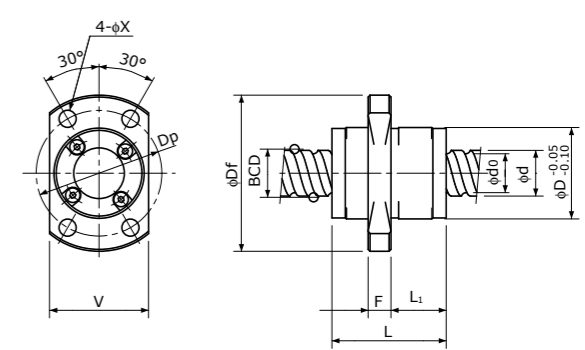
- 也可生产对轴端直径进行了加粗设计的台阶型冷轧加工 (下图), 详情请垂询本公司。(轴端直径 $\phi 12$ 以下)
- Rolled Ball Screws with integrated journal are available ( $\phi 12$  or less only), which have larger diameter than threaded area shown below.



Type-1: Return-plate type  
复式回路板循环方式



Type-2: End-deflector type  
偏转器式循环方式



Type-3: End-cap type or End-deflector type  
端盖循环方式或偏转器式循环方式

Unit (单位): mm

Ball Nut Model number 螺母型号	Shaft nominal dia. 丝杠轴公称外径 d	Lead 导程	Ball size 丝杠直径	BCD 钢珠中心直径	Lead angle 导程角	Root dia. 底径 d <sub>0</sub>	Number of Circuit 循环数	Basic Load Rating 基本额定负载 N		Nut Rigidity 螺母刚性 N/μm	Nut dimension 螺母尺寸									Ball Nut Model number 螺母型号	
								Dynamic 额定动负载 Ca	Static 额定静负载 Coa		Nut type 螺母类型	D	Df	L	L <sub>1</sub>	F	W	V	Dp		Bolt Hole 安装孔 X
MRB 1002 **	10	2	1.5875	10.30	3° 32'	8.6	3.7×1	2700	5300	134	1	23	40	24	19	5	—	25	32	4.5	MRB 1002 **
MRB 1002K	10	2	1.2	10.30	3° 32'	9.0	1×3	1450	3000	93	2	17	34	19	14	5	—	21	26	4.5	MRB 1002K
MRB 1003	10	3	2.0	10.30	5° 18'	8.2	3.7×1	3900	7200	140	1	24	41	29	24	5	—	26	33	4.5	MRB 1003
MRB 1004	10	4	2.0	10.30	7° 03'	8.2	2.7×1	3000	5200	104	1	24	41	28	23	5	—	26	33	4.5	MRB 1004
MRB 1005	10	5	2.0	10.30	8° 47'	8.2	2.7×1	3000	5200	103	2	23	40	26	21	5	—	25	32	4.5	MRB 1005
MRB 1006	10	6	2.0	10.30	10° 30'	8.2	2.7×1	3000	5000	102	1	26	42	33	28	5	—	28	34	4.5	MRB 1006
MRB 1010	10	10	2.0	10.50	16° 52'	8.4	1.6×2	3300	5900	117	3	23	40	24	13	5	—	25	32	4.5	MRB 1010
MRB 1012	10	12	2.0	10.50	19° 59'	8.4	1.6×2	3300	6200	115	3	23	40	28	17	5	—	25	32	4.5	MRB 1012
MRB 1015	10	15	2.0	10.50	24° 27'	8.4	1.6×2	3300	6400	110	3	23	40	33	22	5	—	25	32	4.5	MRB 1015
MRB 1020	10	20	1.5875	10.40	31° 28'	8.7	0.7×4	2100	4000	88	3	20	37	23	13	5	—	22	29	4.5	MRB 1020
MRB 1202	12	2	1.5875	12.30	2° 58'	10.6	3.7×1	3000	6400	156	1	25	42	24	19	5	—	27	34	4.5	MRB 1202
MRB 1202K	12	2	1.2	12.30	2° 58'	11.0	1×3	1600	3700	109	2	19	36	19	14	5	—	23	28	4.5	MRB 1202K
MRB 1210	12	10	2.381	12.65	14° 07'	10.2	1.7×2	5100	9800	152	3	24	41	30	14.5	6	—	26	33	4.5	MRB 1210

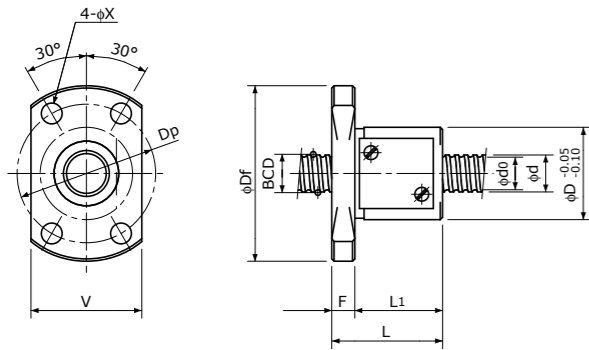
注1) 标准螺纹旋向为右旋。  
 注2) 设计时, 由于生产及组装螺母的关系, 请使滚珠丝杠的两个轴端不超过丝杠轴直径。  
 需要单侧台阶型时, 请垂询本公司。  
 注3) 标准螺母不带密封。  
 不能安装密封, 敬请注意。  
 注4) 刚性  
 表中的刚性值, 是在相当于基本额定动负载Ca的30%的轴向负载作用时, 根据轴向弹性位移量计算的理论值。  
 轴向负载与上述条件不同时, 可通过p-A823的公式计算。  
 注5) 不锈钢冷轧滚珠丝杠  
 螺母型号后带\*\*者可提供不锈钢冷轧滚珠丝杠。

Note 1) All models are Right-hand screw.  
 Note 2) The diameter of the Screw Shaft both ends must be less than the Screw Shaft Root diameter, because of production and Nut assembly reason. If bigger end-journal than Shaft diameter is required, please consult KSS.  
 Note 3) Ball Nut dimension is without seal at the both ends. All type of Ball Nuts cannot equip with seals.  
 Note 4) Rigidity  
 The Rigidity values shown in the table are theoretical values calculated from the amount of Elastic Displacement under the Axial load equivalent to 30% of the Basic Dynamic Load Rating Ca.  
 For Axial load condition other than the above, see the formula in p-A823, you can calculate Rigidity using this formula.  
 Note 5) Stainless Rolled Ball Screw  
 Stainless Rolled Ball Screw is available for Ball Nut Model Number marked \*\*.

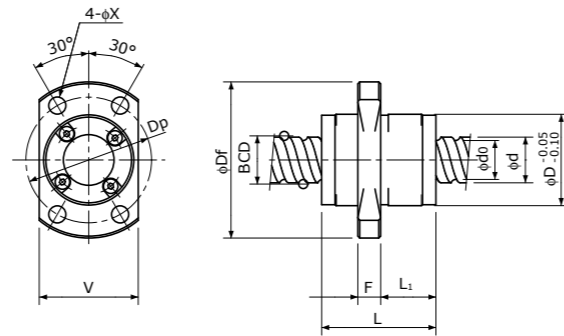
# Rolled Ball Screws 冷轧滚珠丝杠

## Single Nut with Flange 带法兰单螺母

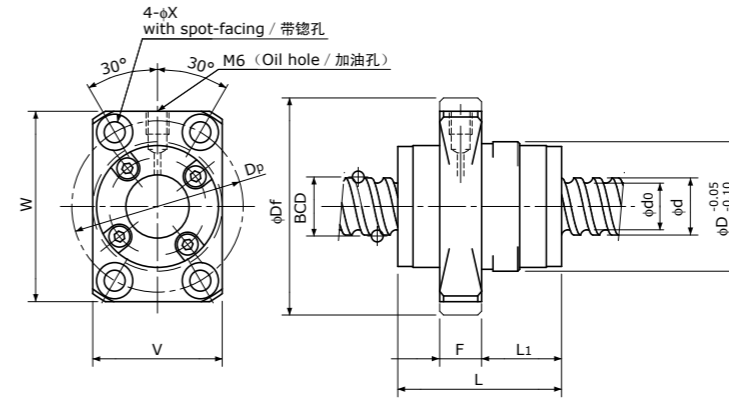
Backlash type  
齿侧间隙型



Type-1:Return-plate type  
复式回路板循环方式



Type-3:End-cap type or End-deflector type  
端盖循环方式或偏转器式循环方式



Type-4:End-deflector type  
偏转器式循环方式

Unit (单位): mm

Ball Nut Model number 螺母型号	Shaft nominal dia. 丝杠轴公称外径 d	Lead 导程	Ball size 丝杠直径	BCD 钢珠中心直径	Lead angle 导程角	Root dia. 底径 d <sub>0</sub>	Number of Circuit 循环数	Basic Load Rating 基本额定负载 N		Nut Rigidity 螺母刚性 N/∑m	Nut dimension 螺母尺寸										Ball Nut Model number 螺母型号
								Dynamic 额定动负载 Ca	Static 额定静负载 Coa		Nut type 螺母类型	D	Df	L	L <sub>1</sub>	F	W	V	Dp	Bolt Hole 安装孔 X	
MRB 1312	13	12	2.381	13.50	15° 48'	11.0	1.6×2	5000	9900	151	3	28	45	30	17	5	—	30	37	4.5	MRB 1312
MRB 1315	13	15	2.381	13.50	19° 29'	11.0	1.6×2	5000	10300	147	3	28	45	35	22	5	—	30	37	4.5	MRB 1315
MRB 1320	13	20	2.381	13.50	25° 15'	11.0	1.6×2	5000	10700	142	3	28	45	43	29	5	—	30	37	4.5	MRB 1320
MRB 1402	14	2	1.5875	14.30	2° 33'	12.6	3.7×1	3200	7500	176	1	26	45	25	19	6	—	28	36	5.5	MRB 1402
MRB 1404	14	4	2.381	14.30	5° 05'	11.8	3.7×1	5700	11600	187	1	30	49	33	27	6	—	32	40	5.5	MRB 1404
MRB 1505	15	5	3.175	15.50	5° 41'	12.2	3.7×1	8900	17000	208	4	34	57	33	16	11	50	34	45	5.5	MRB 1505
MRB 1510	15	10	3.175	15.50	11° 36'	12.2	2.7×2	12000	25000	289	4	34	57	43	21	11	50	34	45	5.5	MRB 1510
MRB 1520	15	20	3.175	15.75	22° 01'	12.7	1.7×2	8000	16000	178	4	34	57	52	28.5	11	50	34	45	5.5	MRB 1520

- 注1) 标准螺纹旋向为右旋。
- 注2) 设计时, 由于生产及组装螺母的关系, 请使滚珠丝杠的两个轴端不超过丝杠轴底径。需要单侧台阶型时, 请垂询本公司。
- 注3) 标准螺母不带密封。不能安装密封, 敬请注意。
- 注4) 刚性  
表中的刚性值, 是在相当于基本额定动负载Ca的30%的轴向负载作用时, 根据轴向弹性位移量计算的理论值。轴向负载与上述条件不同时, 可通过p-A823的公式计算。
- 注5) 不锈钢冷轧滚珠丝杠  
螺母型号后带\*\*者可提供不锈钢冷轧滚珠丝杠。

- Note 1) All models are Right-hand screw.
- Note 2) The diameter of the Screw Shaft both ends must be less than the Screw Shaft Root diameter, because of production and Nut assembly reason. If bigger end-journal than Shaft diameter is required, please consult KSS.
- Note 3) Ball Nut dimension is without seal at the both ends. All type of Ball Nuts cannot equip with seals.
- Note 4) Rigidity  
The Rigidity values shown in the table are theoretical values calculated from the amount of Elastic Displacement under the Axial load equivalent to 30% of the Basic Dynamic Load Rating Ca. For Axial load condition other than the above, see the formula in p-A823, you can calculate Rigidity using this formula.
- Note 5) Stainless Rolled Ball Screw  
Stainless Rolled Ball Screw is available for Ball Nut Model Number marked \*\*.