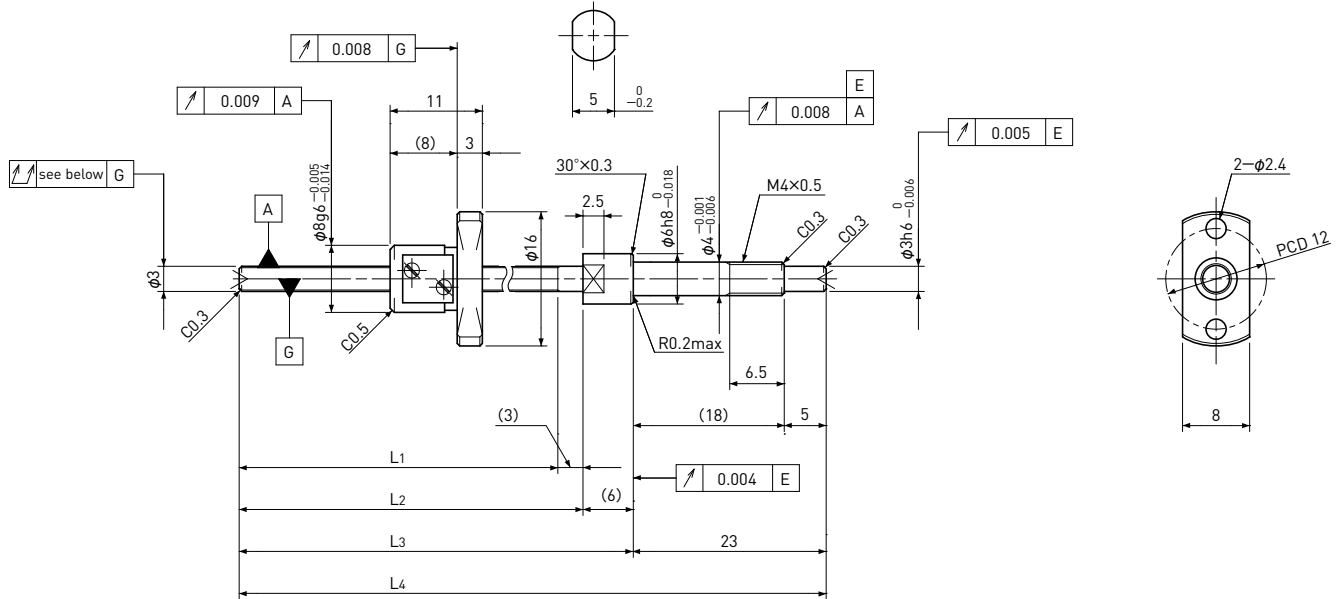


SG0300.5

Shaft dia. $\phi 3$ Lead 0.5mm

C3

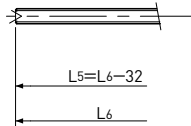


Unit : mm

| Ball Screw Specifications | |
|---------------------------|---------------------------|
| Ball size | $\phi 0.4$ |
| Number of thread | 1 |
| Thread direction | Right |
| Shaft root dia. | $\phi 2.6$ |
| Number of circuit | 2.7×1 |
| Shaft, Nut material | SCM415H |
| Surface hardness | HRC58~62 (Thread area) |
| Anti-rust treatment | Anti-rust oil |

Supported-side end-journal profile

A-type



L5: Thread length after end-journal machining.
L6: Total length after end-journal machining.

| Support-unit Recommendation | Supported-side | — |
|-----------------------------|----------------|-----------|
| | Fixed-side | MSU-4C/4G |

D-type : Other than the above.

Unit : mm

| Ball Screw Model | Travel | Grade | Shaft length | | | | Lead accuracy | | Total Run-out | Axial play | Preload Torque Nm | Basic Load Rating N | |
|--------------------|--------|-------|----------------|----------------|----------------|----------------|------------------------|-----------------|---------------|------------|-------------------|---------------------|------------|
| | | | L ₁ | L ₂ | L ₃ | L ₄ | Travel deviation e_p | Variation V_u | | | | Dynamic Ca | Static Coa |
| SG0300.5-038R070C3 | 25 | C3 | 38 | 41 | 47 | 70 | ± 0.008 | 0.008 | 0.025 | ~0.005 | — | 150 | 220 |

Note) Please refer to page A206 for order code of end-journal machining.