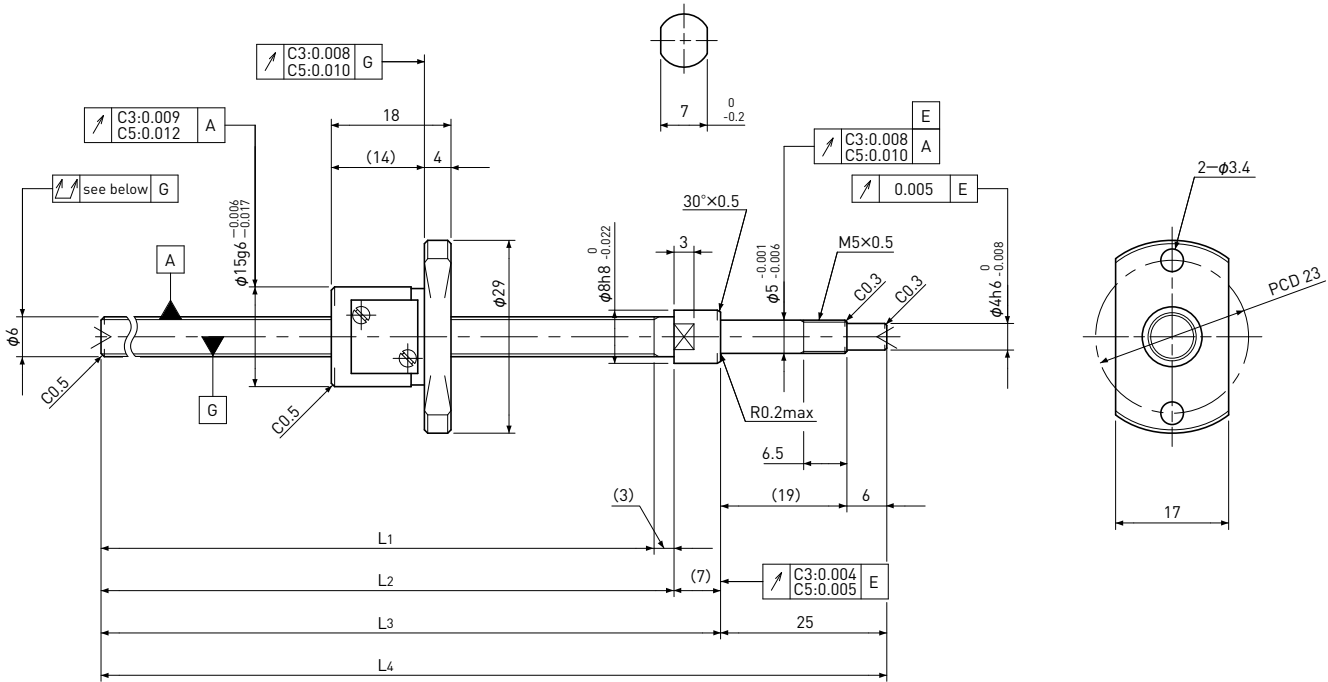


SG0602.5 | Shaft dia. $\phi 6$ Lead 2.5mm

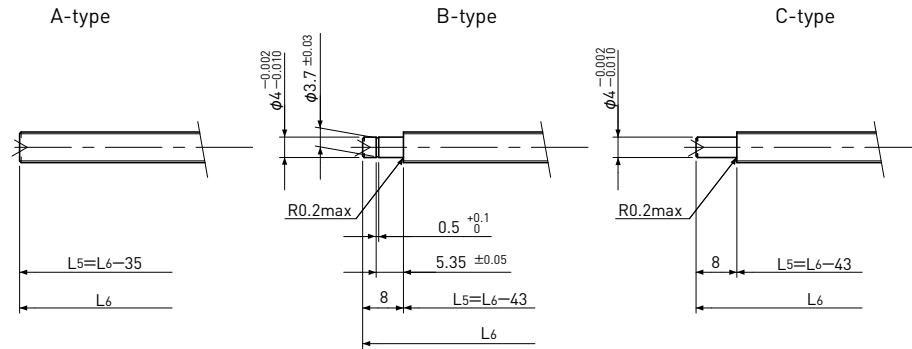
C3&C5



Unit: mm

Ball Screw Specifications	
Ball size	$\phi 1.0$
Number of thread	1
Thread direction	Right
Shaft root dia.	$\phi 5.1$
Number of circuit	2.7 \times 1
Shaft, Nut material	SCM415H
Surface hardness	HRC58~62 (Thread area)
Anti-rust treatment	Anti-rust oil

Supported-side end-journal profile



L5: Thread length after end-journal machining.
L6: Total length after end-journal machining.

Support-unit Recommendation	Supported-side	Fixed-side
	MSU-5CS/5GS	MSU-5C/5G

D-type : Other than the above.

Unit: mm

Ball Screw Model	Travel	Grade	Shaft length				Lead accuracy		Total Run-out	Axial play	Preload Torque Nm	Basic Load Rating N	
			L ₁	L ₂	L ₃	L ₄	Travel deviation e _p	Variation V _u				Dynamic Ca	Static Coa
SG0602.5-085R120C3	65	C3	85	88	95	120	± 0.008	0.008	0.025	0 Spacer Ball (1:1)	0.003~ 0.007	470	590
SG0602.5-135R170C3	115	C3	135	138	145	170	± 0.010	0.008	0.035				
SG0602.5-085R120C5	65	C5	85	88	95	120	± 0.018	0.018	0.035	~0.005	—	750	1200
SG0602.5-135R170C5	115	C5	135	138	145	170	± 0.020	0.018	0.050				

Note) Please refer to page A206 for order code of end-journal machining.