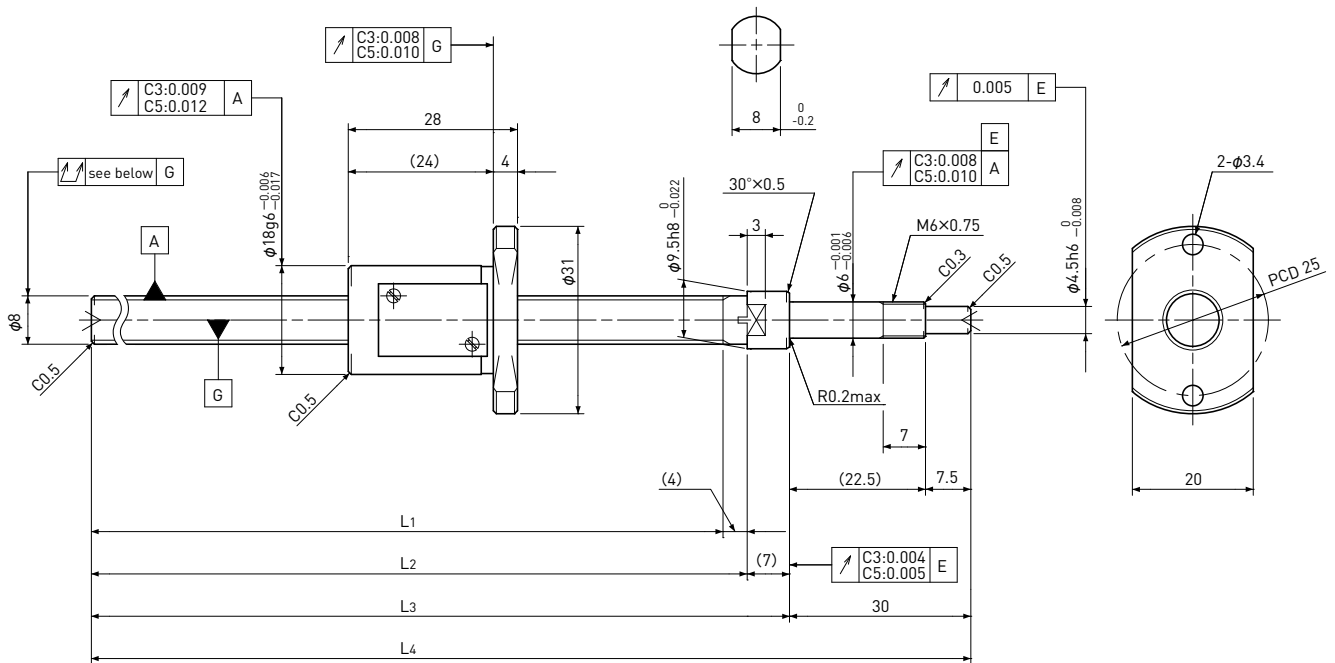


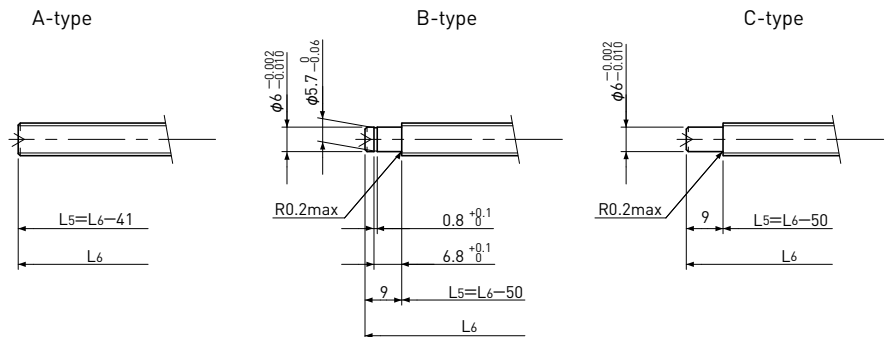
Standard products in stock SG series

SG0805Shaft dia. $\phi 8$ Lead 5mm**C3&C5**

Unit: mm

Ball Screw Specifications	
Ball size	$\phi 1.5875$
Number of thread	1
Thread direction	Right
Shaft root dia.	$\phi 6.6$
Number of circuit	2.7×1
Shaft, Nut material	SCM415H
Surface hardness	HRC58~62 (Thread area)
Anti-rust treatment	Anti-rust oil

Supported-side end-journal profile



L5: Thread length after end-journal machining.

L6: Total length after end-journal machining.

Support-unit Recommendation	Supported-side	MSU-6CS/6GS
	Fixed-side	MSU-6C/6G

D-type : Other than the above.

Unit: mm

Ball Screw Model	Travel	Grade	Shaft length				Lead accuracy		Total Run-out	Axial play	Preload Torque Nm	Basic Load Rating N	
			L ₁	L ₂	L ₃	L ₄	Travel deviation e_p	Variation V_u				Dynamic C_a	Static C_{oa}
SG0805-099R140C3	70	C3	99	103	110	140	± 0.008	0.008	0 Spacer Ball (1:1)	~0.015	1150	1500	
SG0805-209R250C3	180	C3	209	213	220	250	± 0.012	0.008					
SG0805-099R140C5	70	C5	99	103	110	140	± 0.018	0.018	~0.005	—	1850	3000	
SG0805-209R250C5	180	C5	209	213	220	250	± 0.023	0.018					

Note) Please refer to page A206 for order code of end-journal machining.