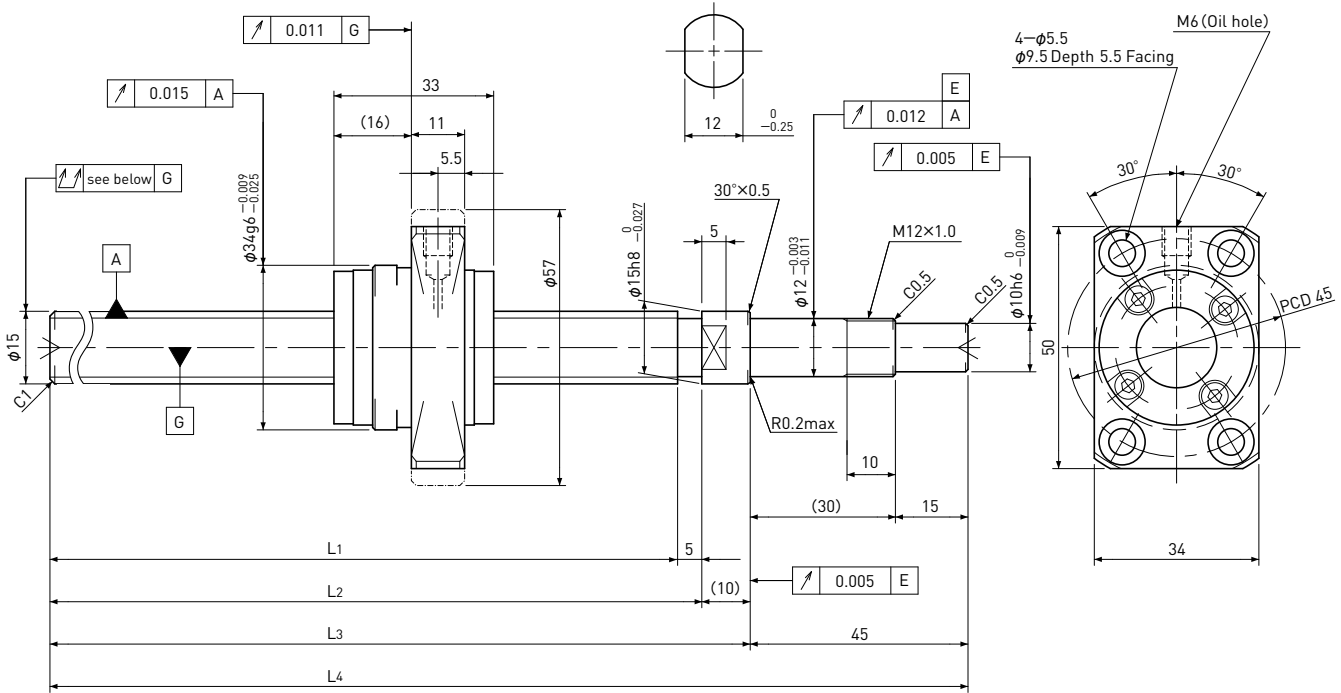


SG1505

Shaft dia. $\phi 15$ Lead 5mm

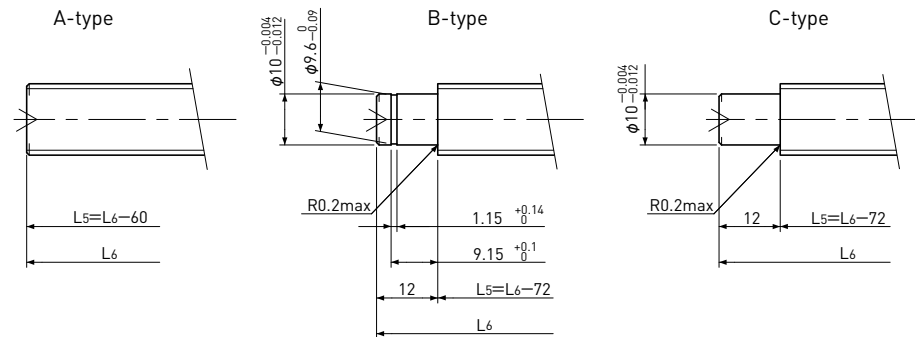
C5



Unit: mm

| Ball Screw Specifications | |
|---------------------------|------------------------|
| Ball size | $\phi 3.175$ |
| Number of thread | 1 |
| Thread direction | Right |
| Shaft root dia. | $\phi 12.2$ |
| Number of circuit | 3.7×1 |
| Shaft, Nut material | SCM415H |
| Surface hardness | HRC58~62 (Thread area) |
| Anti-rust treatment | Anti-rust oil |

Supported-side end-journal profile



L5: Thread length after end-journal machining.
L6: Total length after end-journal machining.

| Support-unit Recommendation | Supported-side | Fixed-side |
|-----------------------------|----------------|------------|
| | : | — |

D-type : Other than the above.

Unit: mm

| Ball Screw Model | Travel | Grade | Shaft length | | | | Lead accuracy | | Total Run-out | Axial play | Preload Torque Nm | Basic Load Rating N | |
|------------------|--------|-------|--------------|-----|-----|-----|------------------------|-----------------|---------------|------------|-------------------|---------------------|-----------------|
| | | | L1 | L2 | L3 | L4 | Travel deviation e_p | Variation V_u | | | | Dynamic C_a | Static C_{oa} |
| SG1505-340R400C5 | 305 | C5 | 340 | 345 | 355 | 400 | ± 0.025 | 0.020 | 0.055 | ~0.005 | — | 8900 | 17000 |
| SG1505-540R600C5 | 505 | C5 | 540 | 545 | 555 | 600 | ± 0.030 | 0.023 | 0.075 | | | | |

Note) Please refer to page A206 for order code of end-journal machining.