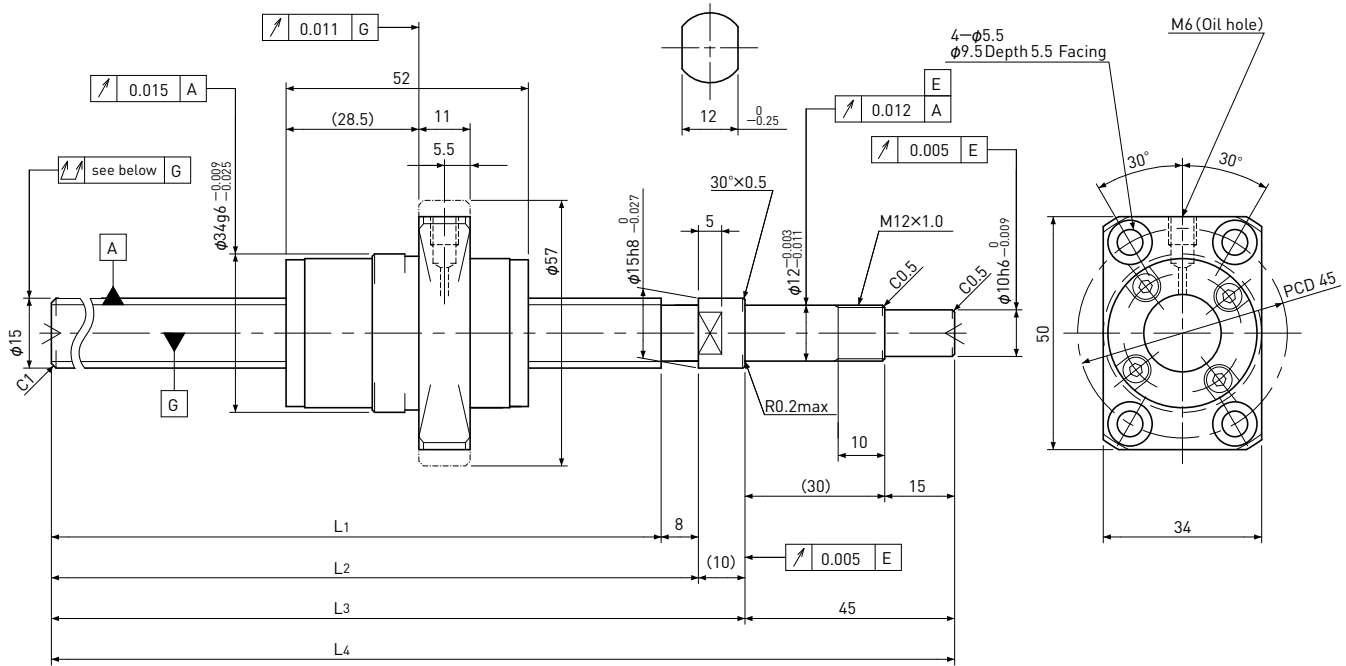


SG1520

Shaft dia. $\phi 15$ Lead 20mm

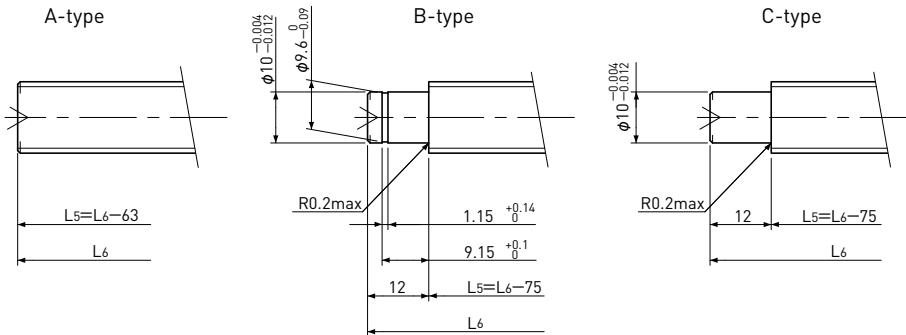
C5



Unit: mm

Ball Screw Specifications	
Ball size	$\phi 3.175$
Number of thread	2
Thread direction	Right
Shaft root dia.	$\phi 12.4$
Number of circuit	1.7×2
Shaft, Nut material	SCM415H
Surface hardness	HRC58~62 (Thread area)
Anti-rust treatment	Anti-rust oil

Supported-side end-journal profile



L_5 : Thread length after end-journal machining.
 L_6 : Total length after end-journal machining.

Support-unit Recommendation	Supported-side	Fixed-side
	—	—

D-type : Other than the above.

Unit: mm

Ball Screw Model	Travel	Grade	Shaft length				Lead accuracy		Total Run-out	Axial play	Preload Torque Nm	Basic Load Rating N	
			L_1	L_2	L_3	L_4	Travel deviation e_p	Variation V_u				Dynamic C_a	Static C_{oa}
SG1520-337R400C5	285	C5	337	345	355	400	± 0.025	0.020	0.055	~0.005	—	8000	16000
SG1520-537R600C5	485	C5	537	545	555	600	± 0.030	0.023	0.075				

Note) Please refer to page A206 for order code of end-journal machining.