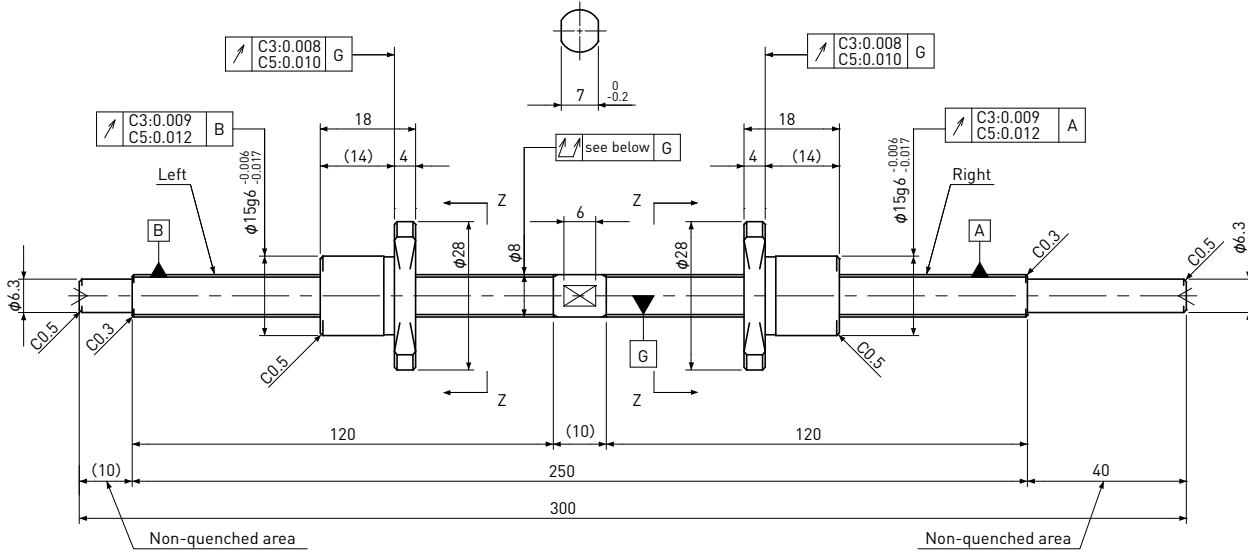


# SD0802

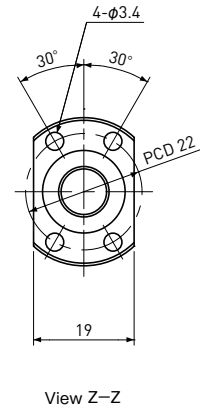
Shaft dia.  $\phi 8$  Lead 2mm

# C3&C5



Unit:mm

Ball Screw Specifications	
Ball size	$\phi 1.2$
Number of thread	1
Thread direction	Left & Right
Shaft root dia.	$\phi 7.0$
Number of circuit	1×3
Shaft, Nut material	SCM415H
Surface hardness	HRC58~62 (Thread area)
Anti-rust treatment	Anti-rust oil



Unit:mm

Ball Screw Model	Travel	Grade	Lead accuracy		Total Run-out	Axial play	Preload Torque Nm	Basic Load Rating N	
			Travel deviation $e_p$	Variation $V_u$				Dynamic $C_a$	Static $C_{oa}$
SD0802-120L120R300C3	100	C3	$\pm 0.010$	0.008	0.050	0	~0.020	1300	2300
SD0802-120L120R300C5	100	C5	$\pm 0.020$	0.018	0.065	~0.005	—		

Note 1) Please designate end-journal profile with your sketch.

Note 2) Absolute position of both Nuts related to the Screw Shaft is not under the control.