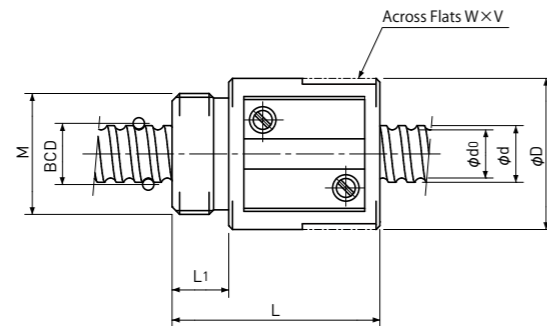


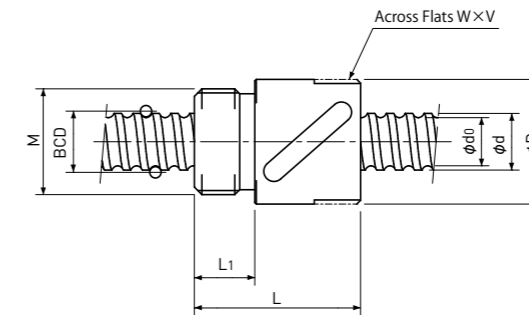
Precision Ball Screws

Single Nut with M-thread

Backlash type/Preload type



Type-1:Return-plate type



Type-2:Return-tube type

Unit : mm

Ball Nut Model number	Shaft nominal dia. d	Lead	Ball size	BCD	Lead angle	Root dia. d ₀	Number of Circuit	Basic Load Rating N		Nut Rigidity N/μm	Nut dimension						Ball Nut Model number	
								Dynamic Ca	Static Coa		Nut type	D	L	L ₁	Across Flats width W	Across Flats length V		M
MS 0401 B	4	1	0.8	4.15	4°23'	3.3	3.7x1	560 / 350	790 / 400	54 / 45	1	11	17	4	10	6	M9x0.75	MS 0401 B
MS 0602 A	6	2	1.0	6.20	5°52'	5.1	2.7x1	750 / 470	1200 / 590	58 / 49	1	16.5	22	8	14	4	M14x1.0	MS 0602 A
MS 0801.5 B	8	1.5	1.0	8.20	3°20'	7.1	3.7x1	1100 / 700	2200 / 1100	99 / 83	1	16.5	24	8	14	5	M14x1.0	MS 0801.5 B
MS 0802 B	8	2	1.5875	8.30	4°23'	6.6	3.7x1	2400 / 1550	4100 / 2100	111 / 94	1	20	27.5	7.5	18	5	M16x1.0	MS 0802 B
MS 0802.5 T(1)	8	2.5	1.5875	8.00	5°41'	6.3	3.5x1	2300 / -	3900 / -	102 / -	2	16.5	22	8	14	4	M14x1.0	MS 0802.5 T(1)
MS 0802.5 T(2)	8	2.5	1.5875	8.00	5°41'	6.3	3.5x1	2300 / -	3900 / -	102 / -	2	17.5	25.5	7.5	15	4	M15x1.0	MS 0802.5 T(2)
MS 0803 A	8	3	2.0	8.30	6°34'	6.2	2.7x1	2600 / 1650	4200 / 2100	85 / 70	1	20	28.5	7.5	18	5	M16x1.0	MS 0803 A
MS 0804 T	8	4	1.5875	8.00	9°03'	5.9	2.5x1	1750 / -	2800 / -	75 / -	2	16.5	24	8	14	4	M14x1.0	MS 0804 T
MS 0805 A	8	5	1.5875	8.30	10°51'	6.6	2.7x1	1850 / 1150	3000 / 1500	82 / 67	1	18	32.5	7.5	16	5	M15x1.0	MS 0805 A

Note 1) The diameter of one of the Screw Shaft ends must be less than the Screw Shaft Root diameter, otherwise Ball Nut cannot be installed.

Note 2) Ball Nut dimension is without seal at the both ends. All type of Ball Nuts cannot equip with seals.

Note 3) The Rigidity values shown in the table are theoretical values of Ball Nut Rigidity calculated from the amount of Elastic Displacement under the following conditions.

Backlash type ; Apply the Axial load equivalent to 30% of the Basic Dynamic Load Rating Ca.

Preload type ; Apply the Preload equivalent to 5% of the Basic Dynamic Load Rating Ca.

For Axial load or Preload condition other than the above, see the formula in p-A823, you can calculate Rigidity using this formula.

Note 4) All models are Right-hand Screw. If Left-hand Screw is required, please ask KSS representative.

Note 5) Across Flats or drill hole is available on the Ball Nut for the convenience of assembly. Please ask KSS representative.

Note 6) Basic Load Rating and Rigidity for Backlash type and Preload type are described in the same cell.

Basic Load Rating N		Nut Rigidity N/μm
Dynamic Ca	Static Coa	
1000 / 640	3300 / 1650	164 / 138

Preload type

Backlash type