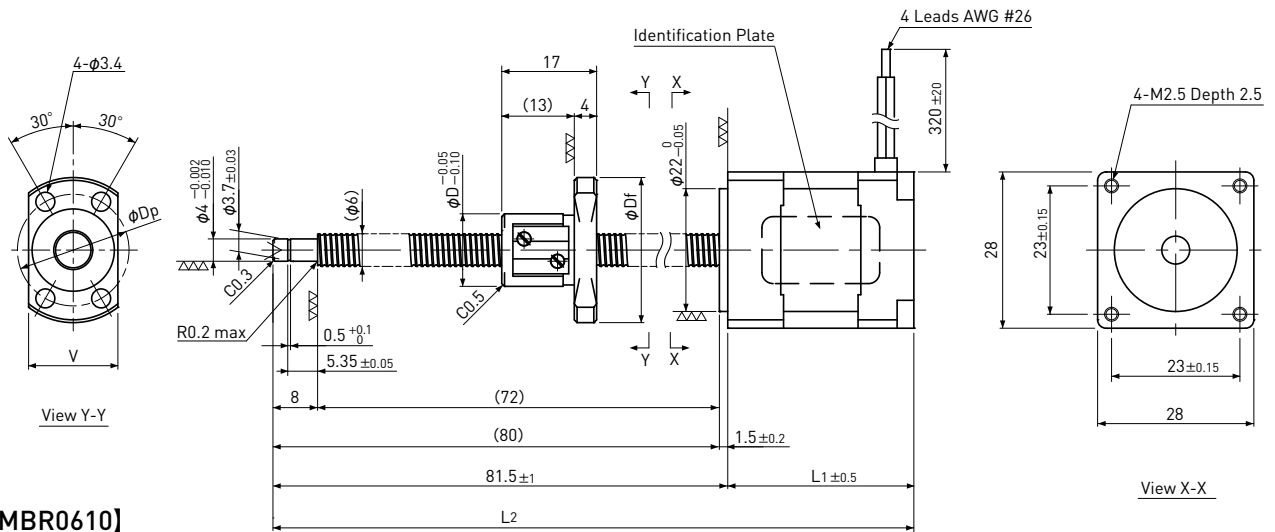


Rolled Ball Screw + 2-phase Stepping Motor

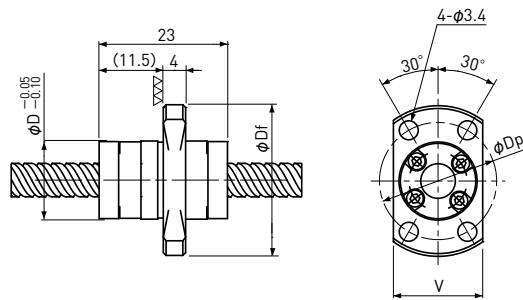
# DMBR  28 / NEMA 11

Shaft dia.  $\phi 6$

[DMBR0601 / DMBR0602]



[DMBR0610]



Unit:mm

Model	Lead	Travel	L <sub>1</sub>	L <sub>2</sub>	D	D <sub>f</sub>	V	D <sub>p</sub>	Mass (g)
DMBR0601-11E2110	1	43	33.35	114.85	13	26	16	20	140
DMBR0602-11E2110	2	43	33.35	114.85	15	28	19	22	148
DMBR0610-11E2110	10	40	33.35	114.85	14	27	16	21	146
DMBR0601-11E2216	1	43	45	126.5	13	26	16	20	194
DMBR0602-11E2216	2	43	45	126.5	15	28	19	22	202
DMBR0610-11E2216	10	40	45	126.5	14	27	16	21	198

Motor Wire	
A	Red
$\bar{A}$	Red/White
B	Green
$\bar{B}$	Green/White

Recommended Drivers	SD4030B3
---------------------	----------

Note) Refer to page P161 for connection diagram of recommended Drivers.

Ball Screw Specifications	
Accuracy grade	JIS Ct7
Thread direction	Right
Axial play	Max 0.03mm
Ball Screw material	Chrome-molybdenum steel
Surface hardness	Min. HRC58
Lubricant	KSS original grease MSG No.2

Note) Please contact KSS if different journal profile or length from the above is required.

Motor Specifications		
Motor Model	11E2110	11E2216
Basic step angle	1.8°	
Driving method	2-phase Bi-polar	
Rated Voltage	DC 2.1 V	DC 2.4 V
Rated current	DC 1.0A/phase	DC 1.6A/phase
Winding resistance	2.1Ω	1.5Ω
Holding Torque	0.036Nm	0.052Nm
Rotor inertia	7.2g·cm <sup>2</sup>	12.0g·cm <sup>2</sup>
Operating temperature	-10°C~50°C	