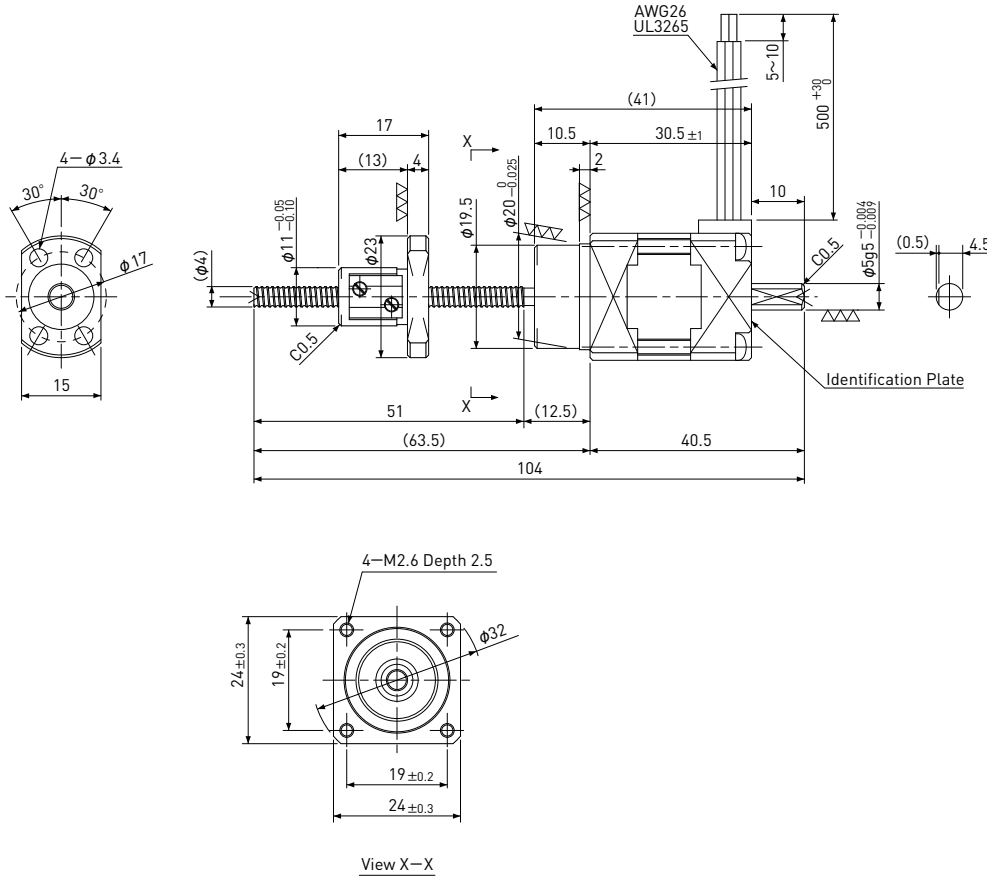


Rolled Ball Screw + 5-Phase Stepping Motor

TMB □24 / NEMA 10

Shaft dia. $\phi 4$



Unit:mm

Model	Lead	Travel	Reference Thrust (N)	Mass (g)
TMB0401	1	30	50	100

Recommended Drivers	KR-A5CC KR-A55MC(Micro step) KR-A535M(Micro step / AC-100~220V)
---------------------	-----------------------------------------------------------------------

Note) Refer to page P162 or P163 for connection diagram of recommended Drivers.

Ball Screw Specifications	
Accuracy grade	JIS Ct7
Thread direction	Right
Axial play	0.020mm or less
Shaft & Nut material	Chrome-molybdenum steel
Surface Coating	Black Chrome coating on Shaft
Surface hardness	HRC58~62 (Thread area)
Lubricant	KSS original grease MSG No.1

Motor Specifications	
Basic step angle	0.72°
Rated Voltage	DC 0.83 V
Rated current	DC 0.75 A/phase
Winding resistance	1.1Ω
Holding Torque	0.018Nm
Rotor inertia	4.2g·cm ²
Operating temperature	-20°C~50°C

Note) Only shaft end cutting is available. Other than that, it would be customized order.