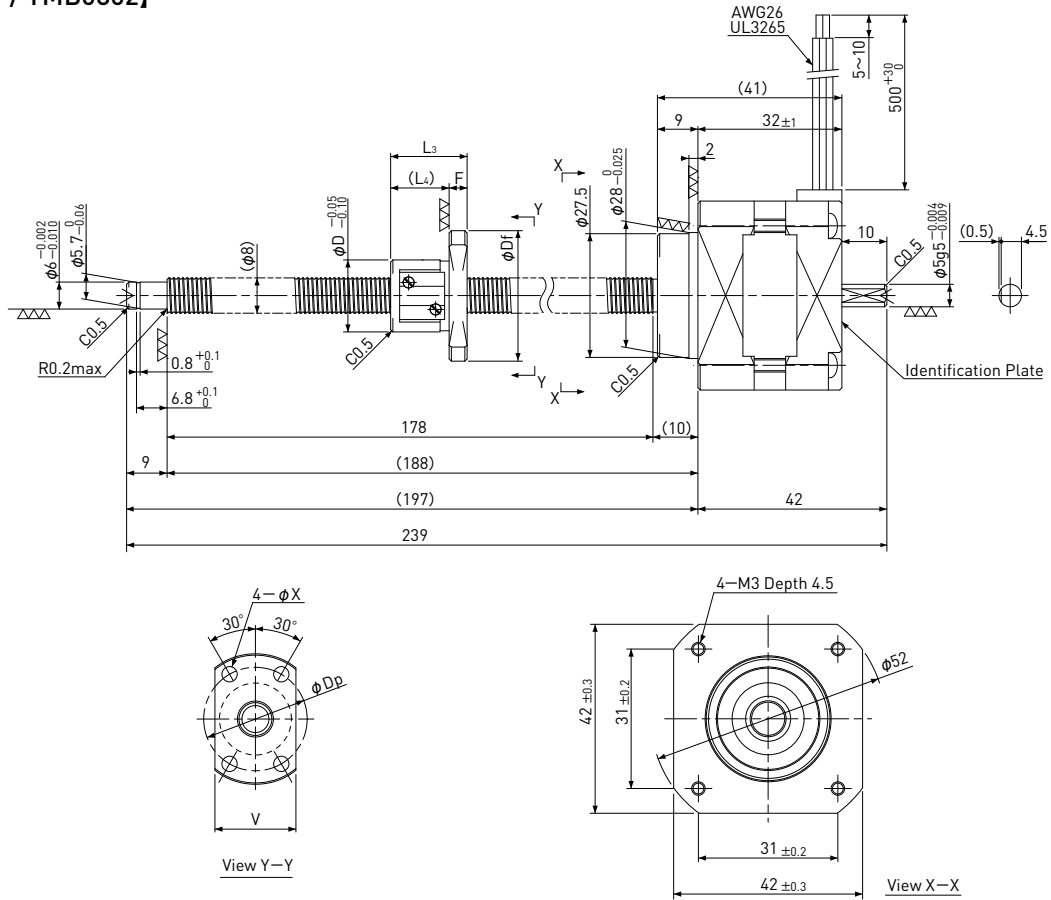


Rolled Ball Screw + 5-Phase Stepping Motor

TMB □42 / NEMA 17

Shaft dia. $\phi 8$

[TMB0801 / TMB0802]



Unit:mm

Model	Lead	Travel	Reference Thrust (N)	D	Df	F	L ₃	L ₄	V	Dp	X	Mass (g)
TMB0801	1	150	300	16	29	4	17	13	18	23	3.4	320
TMB0802	2	150	150	20	37	5	24	19	22	29	4.5	320

Recommended Drivers	KR-A5CC KR-A55MC (Micro step) KR-A535M (Micro step / AC-100~220V)
---------------------	---

Note) Refer to page P162 or P163 for connection diagram of recommended Drivers.

Ball Screw Specifications	
Accuracy grade	JIS Ct7
Thread direction	Right
Axial play	0.020mm or less
Shaft & Nut material	Chrome-molybdenum steel
Surface Coating	Black Chrome coating on Shaft
Surface hardness	HRC58~62 (Thread area)
Lubricant	KSS original grease MSG No.1

Motor Specifications	
Basic step angle	0.72°
Rated Voltage	DC 1.28 V
Rated current	DC 0.75 A/phase
Winding resistance	1.7Ω
Holding Torque	0.128Nm
Rotor inertia	40g·cm ²
Operating temperature	-20°C~50°C

Note) Only shaft end cutting is available. Other than that, it would be customized order.