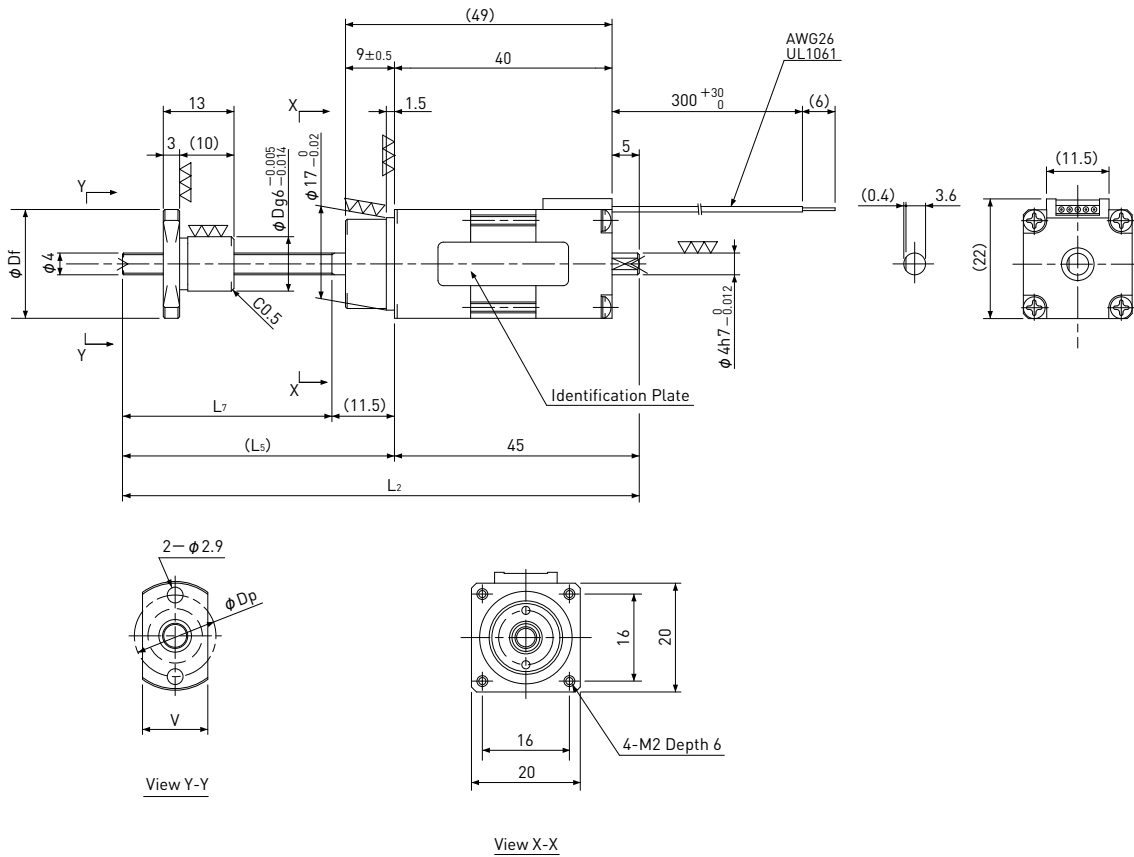


Precision Ball Screw + 5-Phase Stepping Motor

MB 20 / NEMA 08

Shaft dia. $\phi 4$



Unit:mm

Model	Lead	Travel	Reference Thrust (N)	L ₂	L ₅	L ₇	D	D _f	V	D _p	Mass (g)
MB04005A	0.5	20	10	95	50	38.5	10	20	12	15	84
MB0401A	1	30	20	105	60	48.5	9	19	11	14	84

Recommended Drivers	KR-A5CC KR-A55MC(Micro step) KR-A535M(Micro step / AC-100~220V)
---------------------	---

Note) Refer to page P162 or P163 for connection diagram of recommended Drivers.

Ball Screw Specifications	
Accuracy grade	JIS C3
Thread direction	Right
Axial play	MB04005A:0.005mm or less MB0401A:0mm
Shaft material	Stainless steel
Nut material	Chrome-molybdenum steel
Surface hardness	Min. HRC55 (Thread area)
Lubricant	KSS original grease MSG No.1

Motor Specifications	
Basic step angle	0.72°
Rated Voltage	DC 1.05 V
Rated current	DC 0.75 A/phase
Winding resistance	1.4Ω
Holding Torque	0.010Nm
Rotor inertia	3.9g·cm ²
Operating temperature	-20°C~50°C

Note) Only shaft end cutting is available.
Other than that, it would be customized order.