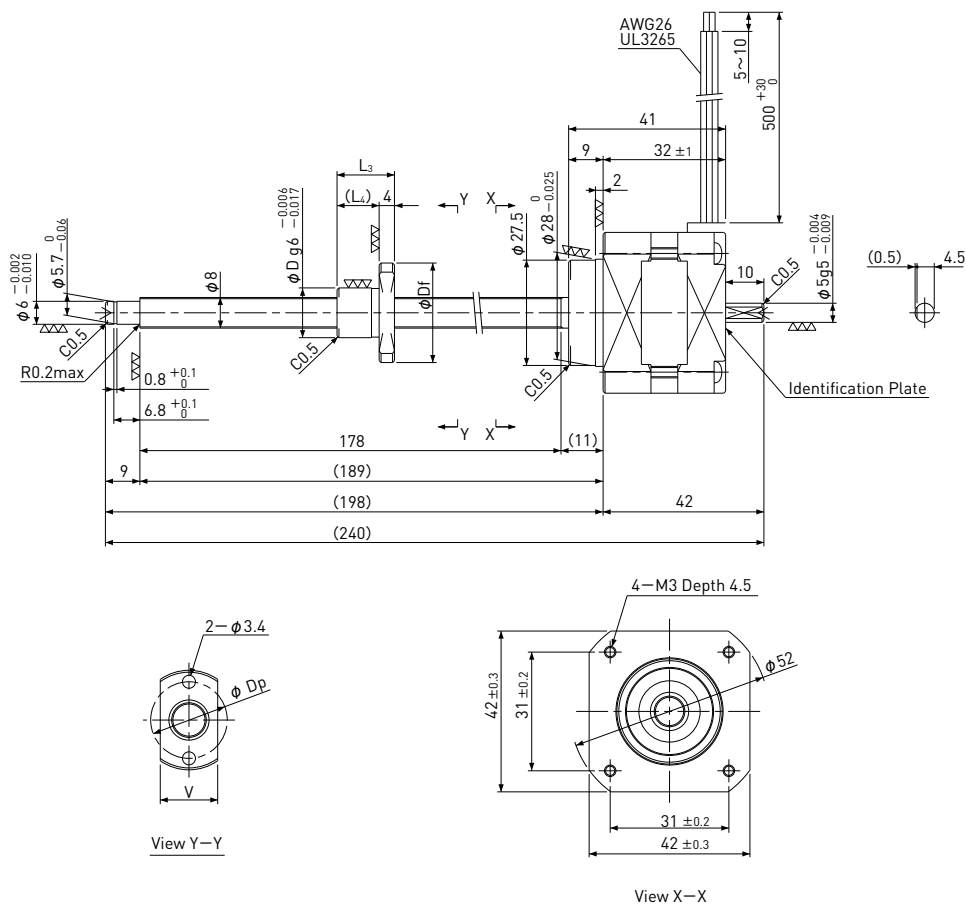


Precision Ball Screw + 5-Phase Stepping Motor

MB 42 / NEMA 17

Shaft dia. $\phi 8$

Linear Actuator External type



Unit:mm

Model	Lead	Travel	Reference Thrust (N)	D	Df	L ₃	L ₄	V	Dp	Mass (g)
MB0801	1	150	300	13	26	15	11	15	20	310
MB0802	2	150	150	15	28	18	14	17	22	320

Recommended Drivers	KR-A5CC
	KR-A55MC (Micro step)
	KR-A535M (Micro step / AC-100~220V)

Note) Refer to page P162 or P163 for connection diagram of recommended Drivers.

Ball Screw Specifications	
Accuracy grade	JIS C3
Thread direction	Right
Axial play	0mm
Shaft material	Stainless steel
Nut material	Chrome-molybdenum steel
Surface hardness	Min. HRC55 (Thread area)
Lubricant	KSS original grease MSG No.1

Motor Specifications	
Basic step angle	0.72°
Rated Voltage	DC 1.28 V
Rated current	DC 0.75 A/phase
Winding resistance	1.7Ω
Holding Torque	0.128Nm
Rotor inertia	41g·cm ²
Operating temperature	-20°C~50°C

Note) Only shaft end cutting is available. Other than that, it would be customized order.