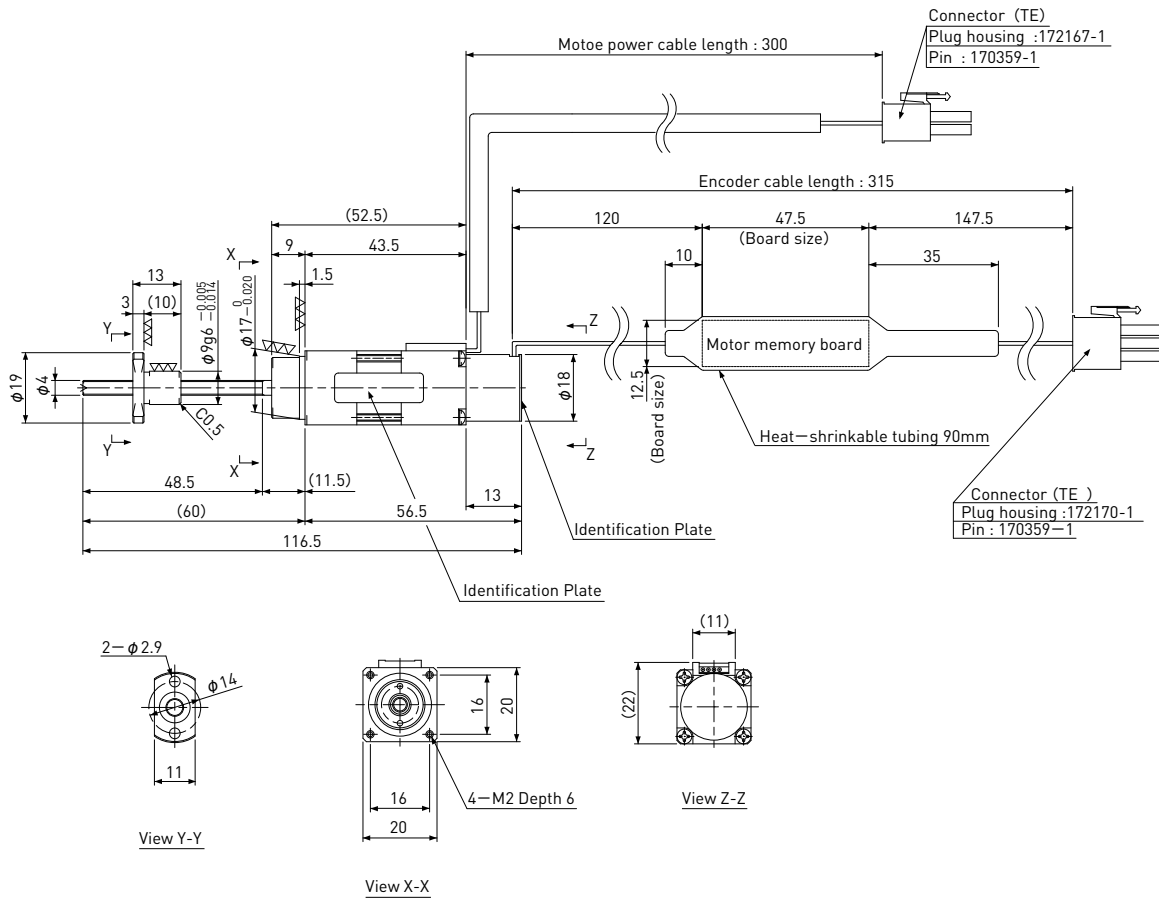


Precision Ball Screw + Stepping Servo Motor

SiMB □20 / NEMA 08

Shaft dia. $\phi 4$



Unit:mm

Model	Lead	Travel	Reference Thrust (N)	Mass (g)
SiMB0401	1	30	30	114

Ball Screw Specifications	
Accuracy grade	JIS C3
Thread direction	Right
Axial play	0
Shaft material	Stainless steel
Nut material	Chrome-molybdenum steel
Surface hardness	Min. HRC55 (Thread area)
Lubricant	KSS original grease MSG No.1

Motor Specifications	
Basic step angle	1.8°
Driving method	2-phase Bi-polar
Rated Voltage	DC 3.0 V
Rated current	DC 0.35 A/phase
Winding resistance	8.5Ω
Holding Torque	0.017Nm
Rotor inertia	1.9g·cm ²
Operating temperature	-20°C~50°C
Encoder	Incremental 200ppr

Note1) Exclusive Driver(Si-02LDE)is required this type.
 Note2) Only shaft end cutting is available. Other than that, it would be customized order.