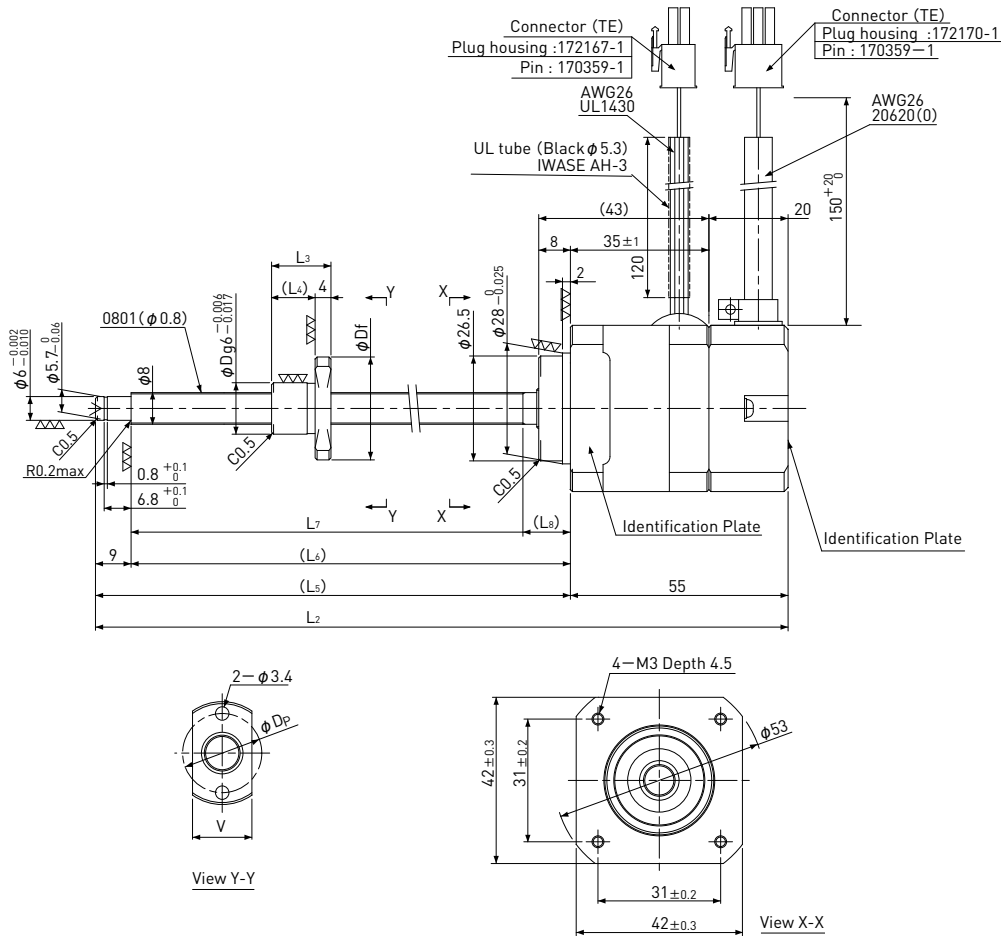


Precision Ball Screw + Stepping Servo Motor

SiMB □42 / NEMA 17

Shaft dia. $\phi 8$



Unit:mm

Model	Lead	Travel	Reference Thrust (N)	L ₂	L ₅	L ₆	L ₇	L ₈	D	D _f	L ₃	L ₄	V	D _p	Mass (g)
SiMB0801	1	100	300	215	160	151	139	12	13	26	15	11	15	20	130
SiMB0802	2	160	150	265	210	201	189	12	15	28	18	14	17	22	165
SiMB0805	5	150	80	265	210	201	188	13	18	31	28	24	20	25	200

Ball Screw Specifications	
Accuracy grade	JIS C3
Thread direction	Right
Axial play	0
Shaft material	Stainless steel
Nut material	Chrome-molybdenum steel
Surface hardness	Min. HRC55 (Thread area)
Lubricant	Multemp PS-2

Motor Specifications	
Basic step angle	1.8°
Driving method	2-phase Bi-polar
Rated Voltage	DC 2.2 V
Rated current	DC 2.0 A/phase
Winding resistance	1.1Ω
Holding Torque	0.24Nm
Rotor inertia	35g·cm ²
Operating temperature	-20°C~50°C
Encoder	Incremental 400ppr

Note1) Exclusive Driver(Si-02DE)is required this type.
 Note2) Only shaft end cutting is available. Other than that, it would be customized order.