

KSS News-letter of Miniature Ball Screws & Actuators

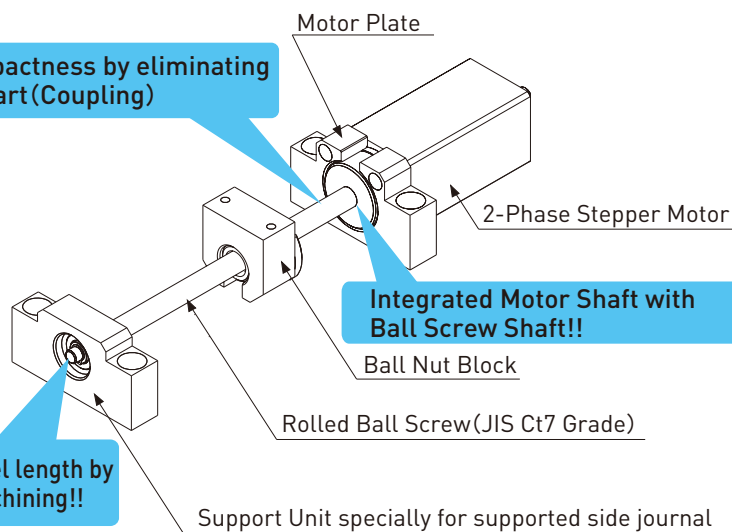
Topics

What is "2-Phase Rolled MoBo" ???

Our "MoBo" is integrated unit which is combined with the Ball Screw and Motor into one, eliminated connecting parts. This time we would like to introduce MoBo using 2-phase Motor and Rolled Ball Screws, as 2-phase Rolled MoBo (2TMB).

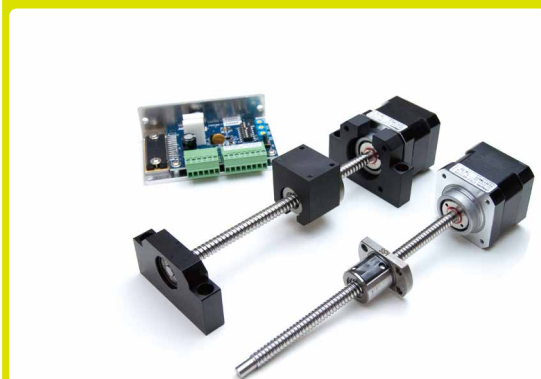
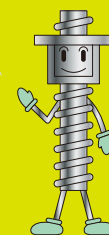
MoBo

Provide compactness by eliminating connection part (Coupling)



Integrated Motor Shaft with Ball Screw Shaft!!

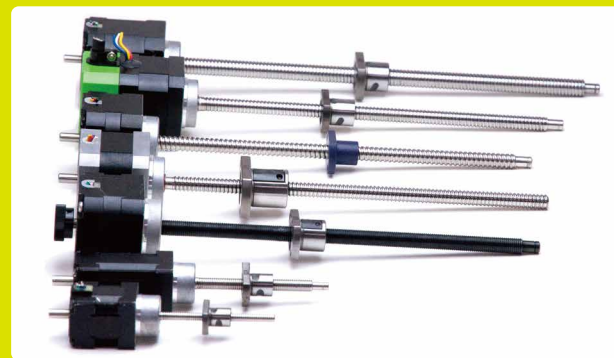
Flexible in travel length by end journal machining!!




- Provide compactness by eliminating connecting part (Coupling).
- Provide cost-saving and more versatility with the combination of Rolled Ball Screws and 2-phase Stepper Motor.
- Can be flexible in travel length by end journal machining (supported side).
- Related parts such as Support Unit, Nut Block, Motor plate for fixed side and Drivers are available.

Varieties of choices available below in MoBo series.

Series	Drive Screw type	Motor
RM	Resin Lead Screw (C10)	2-Phase Stepper
2TMB	Rolled Ball Screw (Ct7)	2-Phase Stepper
TMB	Rolled Ball Screw (Ct7)	5-Phase Stepper
MB	Precision Ball Screw (C3)	5-Phase Stepper



2-Phase Rolled Ball Screw MoBo Catalogue
[Click here](#) 

MoBo Series Catalogue
[Click here](#) 

With our history of more than 40 years of experience with specializing miniature sized Ball Screws, which is with its dia. 1.8mm-16mm. We are sure that we can provide the best support with our expert skills and know-how. We thank you for your consideration.